



Giuseppe Arcimboldo

Today we will be...

Exploring Arcimboldo's paintings of the four elements.





Who is this?
What do you know
about him?

Think, pair, share.





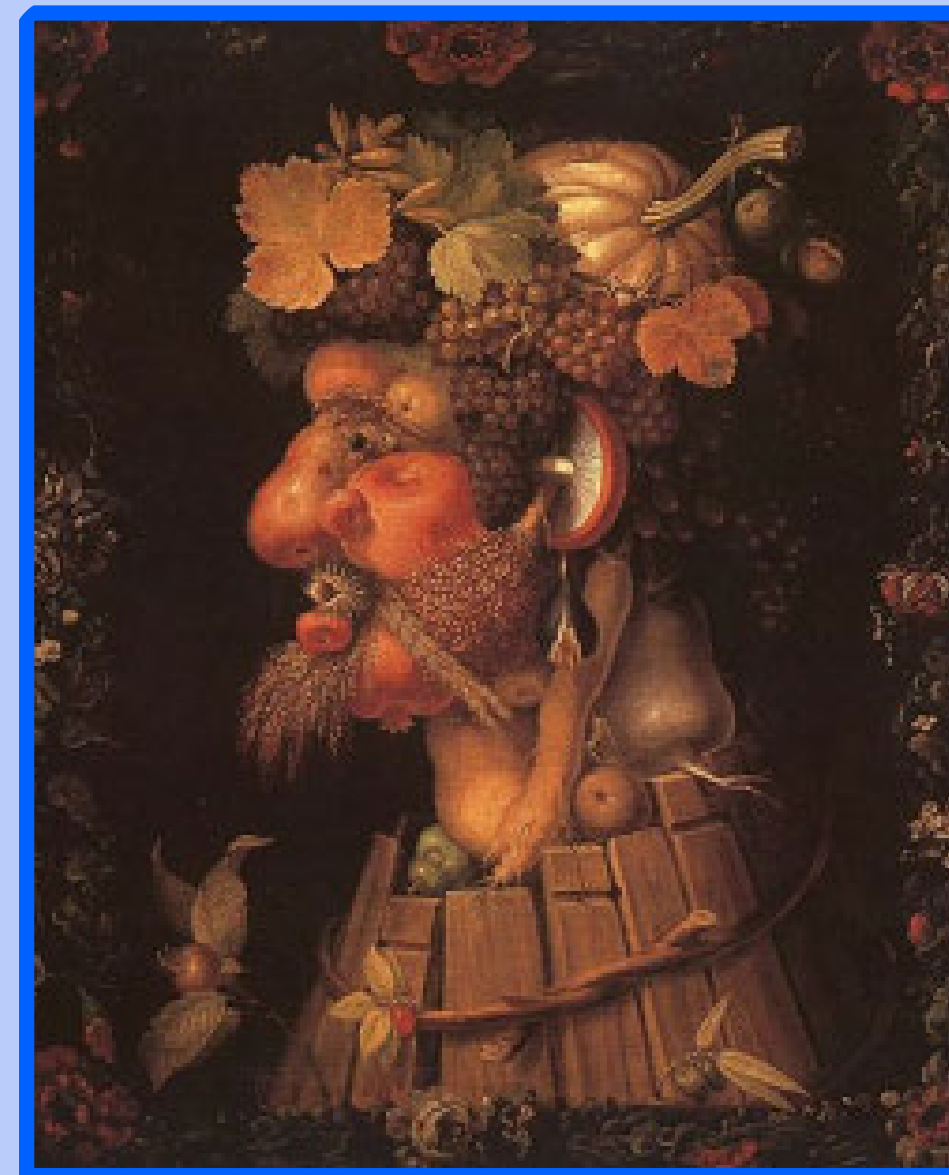
This is Giuseppe Arcimboldo. He was an Italian artist. He painted portraits. His paintings are different from other portraits because he used natural objects to make the faces.



Spring



Summer

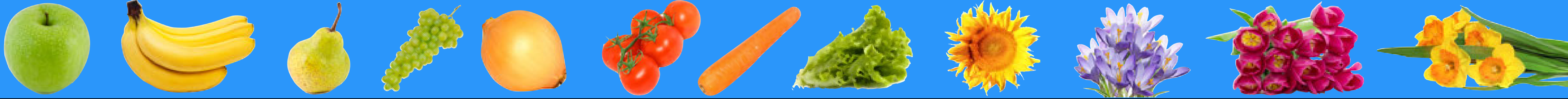


Autumn

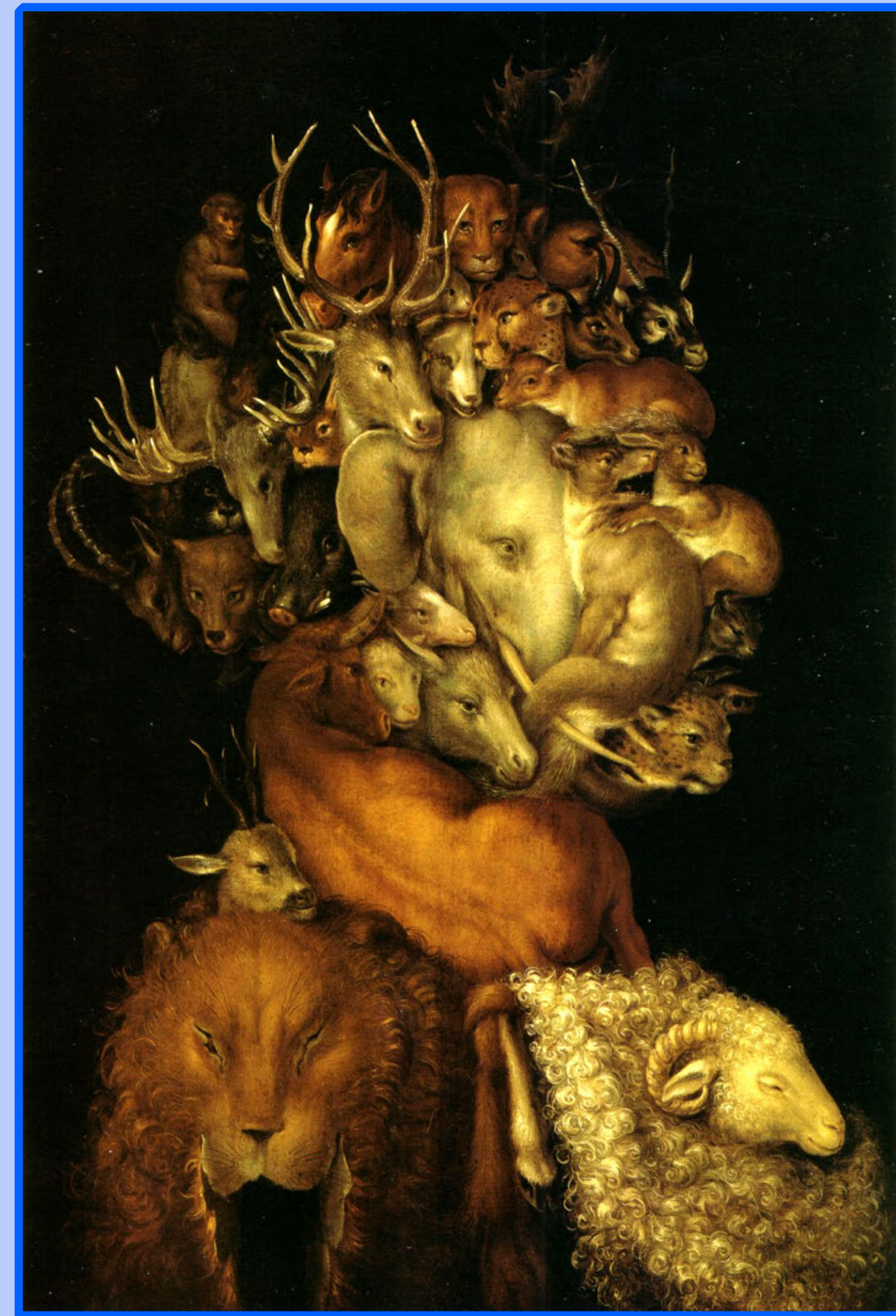


Winter



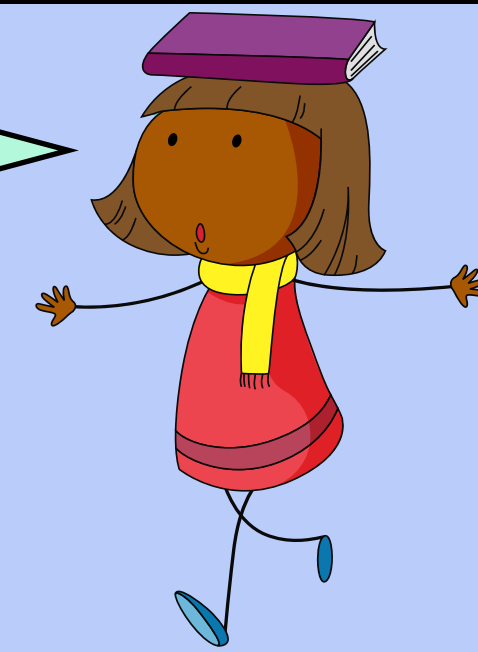


Arcimboldo created paintings to represent the elements
fire, water, air and earth.

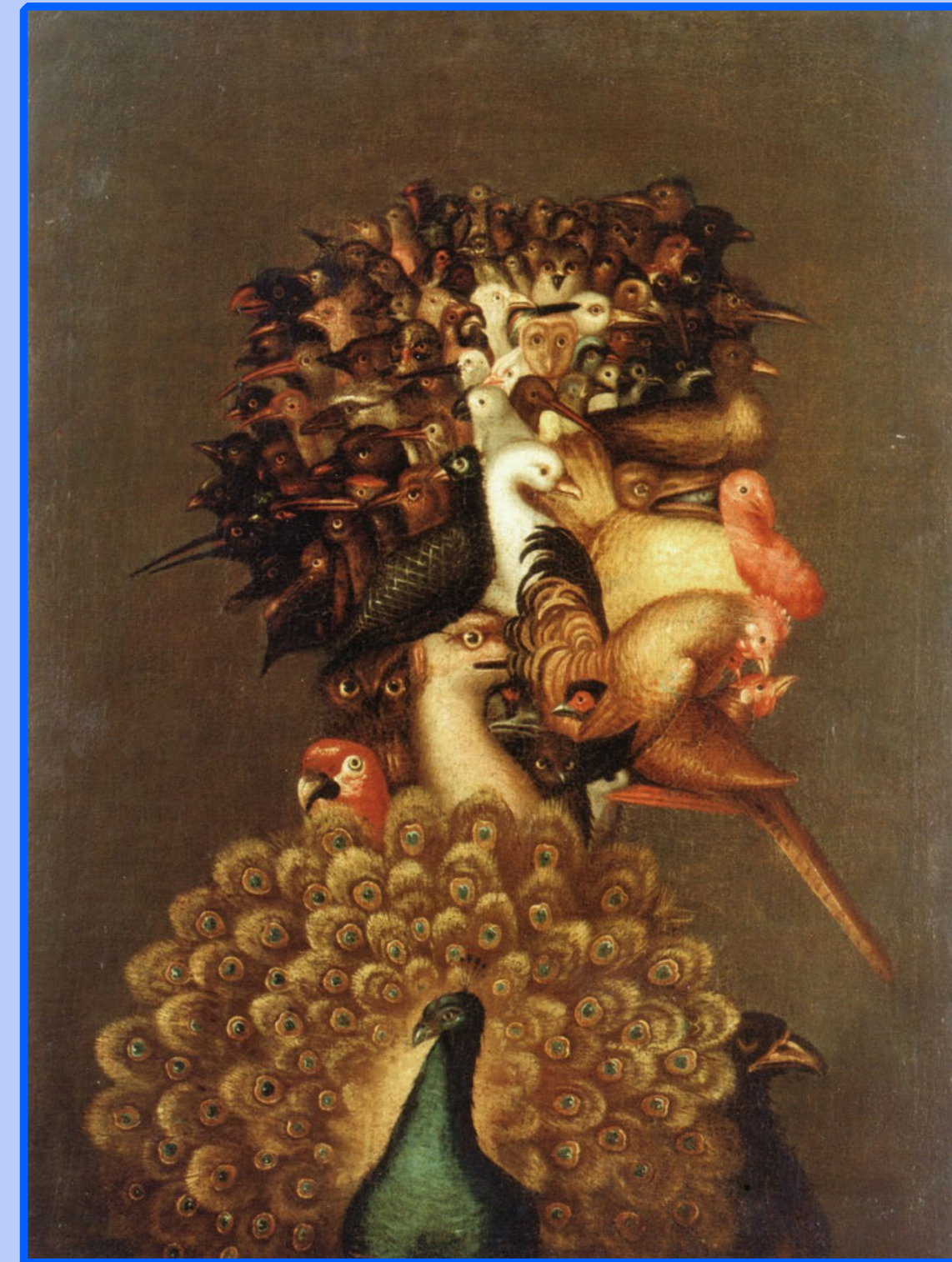
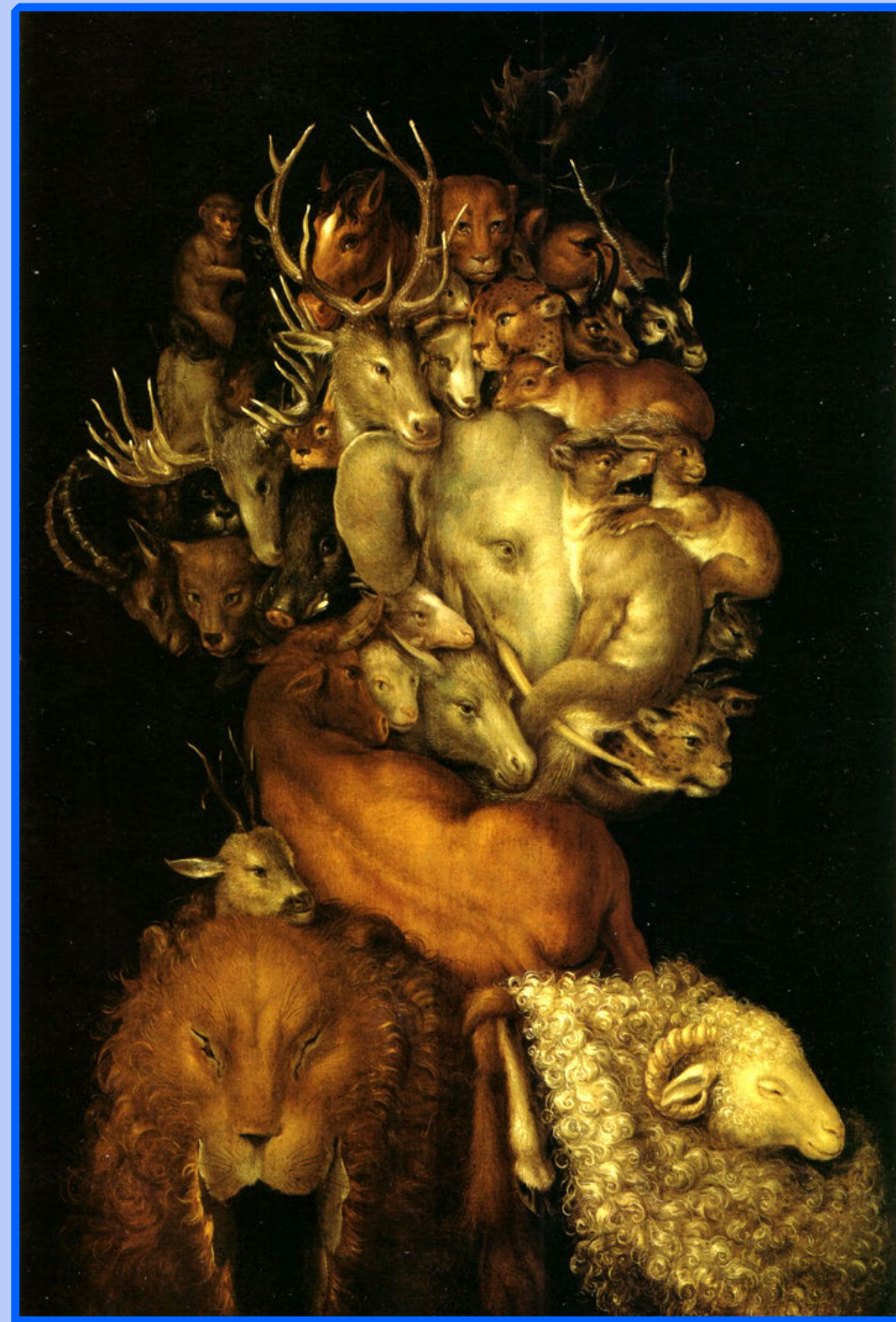
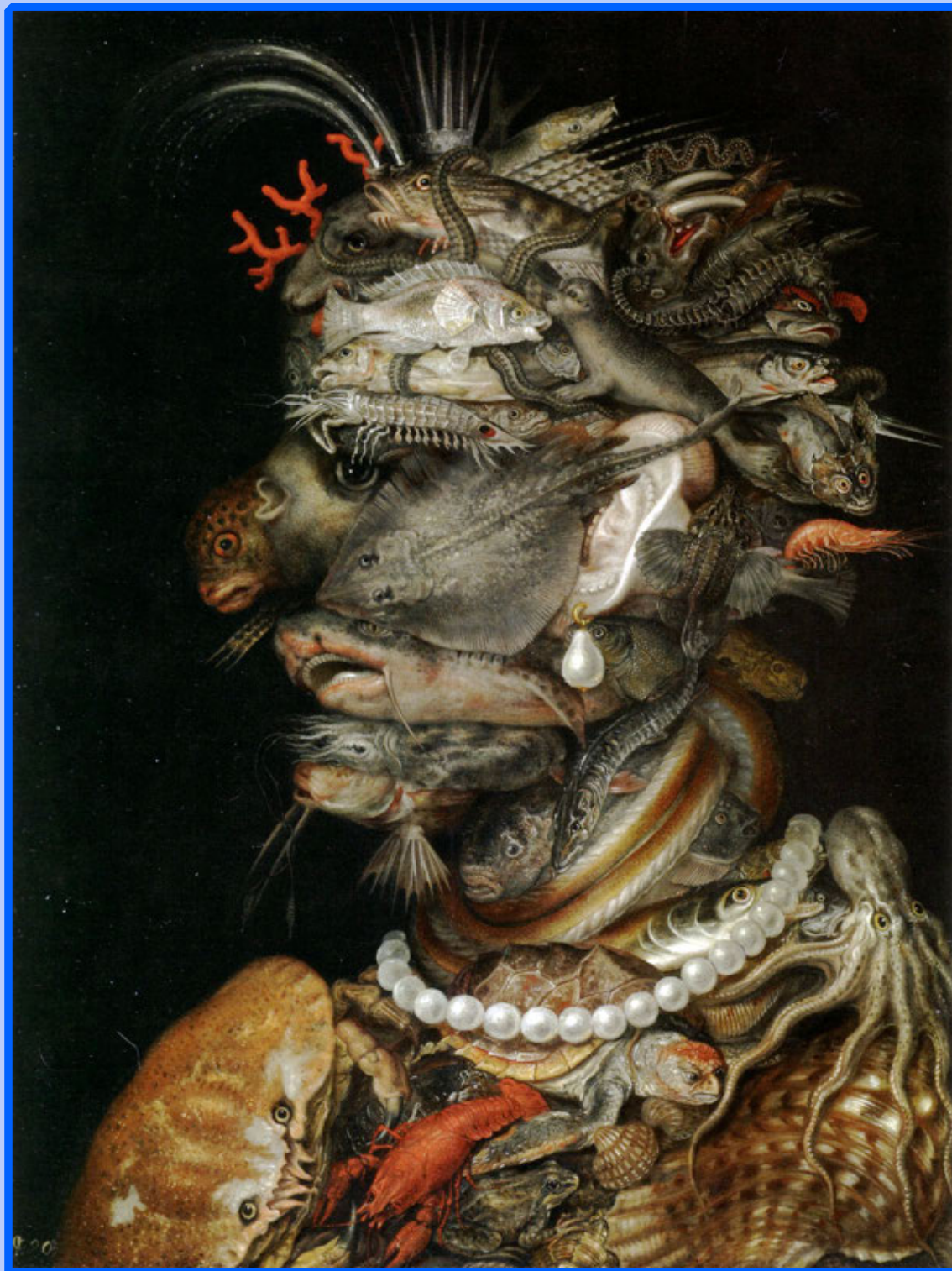




Which painting do you think represents fire? Are there any other items you would include in a portrait of the element fire?



Think, pair, share.



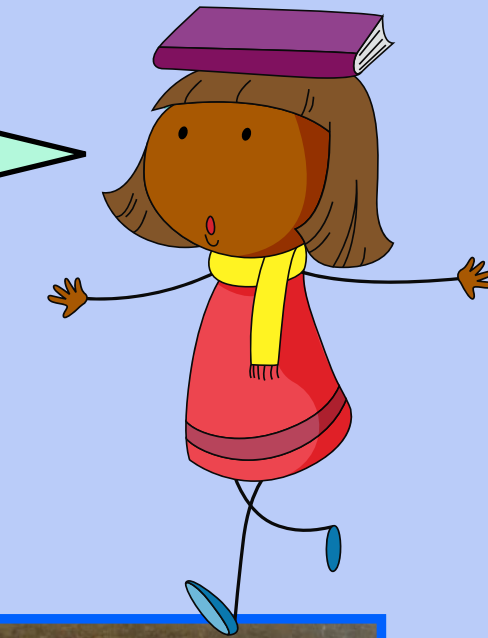


This painting represents fire. Arcimboldo has used a candle for the eye and an oil lamp for the chin. The double-headed eagle was a symbol of the Roman Empire.





Which painting do you think represents water? Are there any other items you would include in a portrait of the element water?



Think, pair, share.





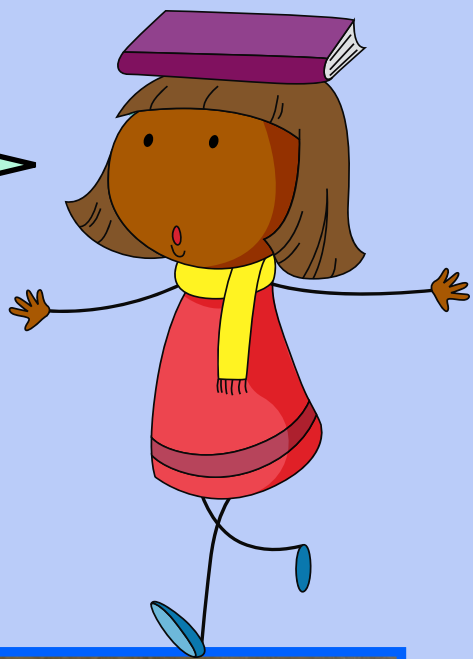
This painting represents water.
Arcimboldo has used lots of different sea creatures to make up the portrait.

Did you spot the ray for the cheek and the pearls around the neck?

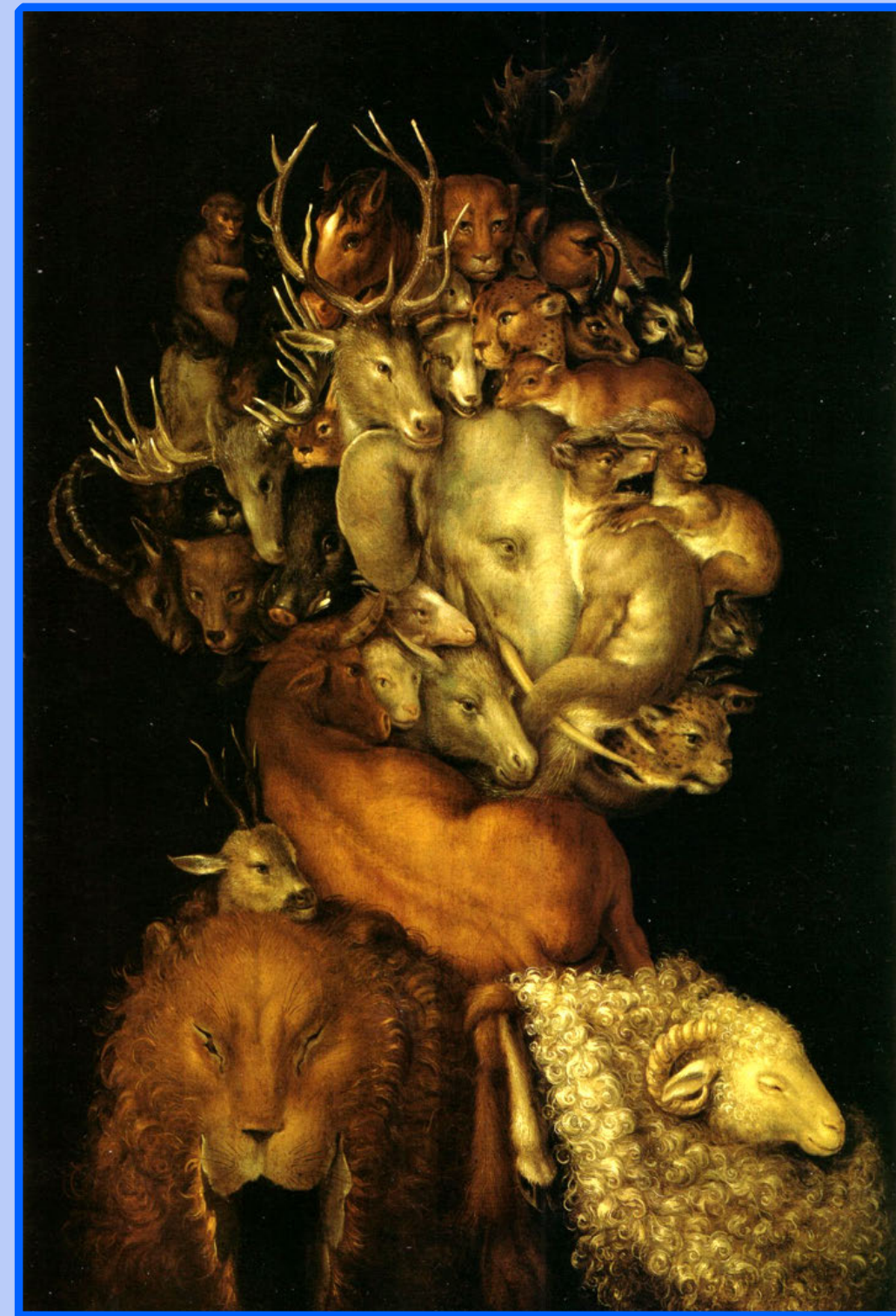




Which painting do you think represents air? Are there any other items you would include in a portrait of the element air?



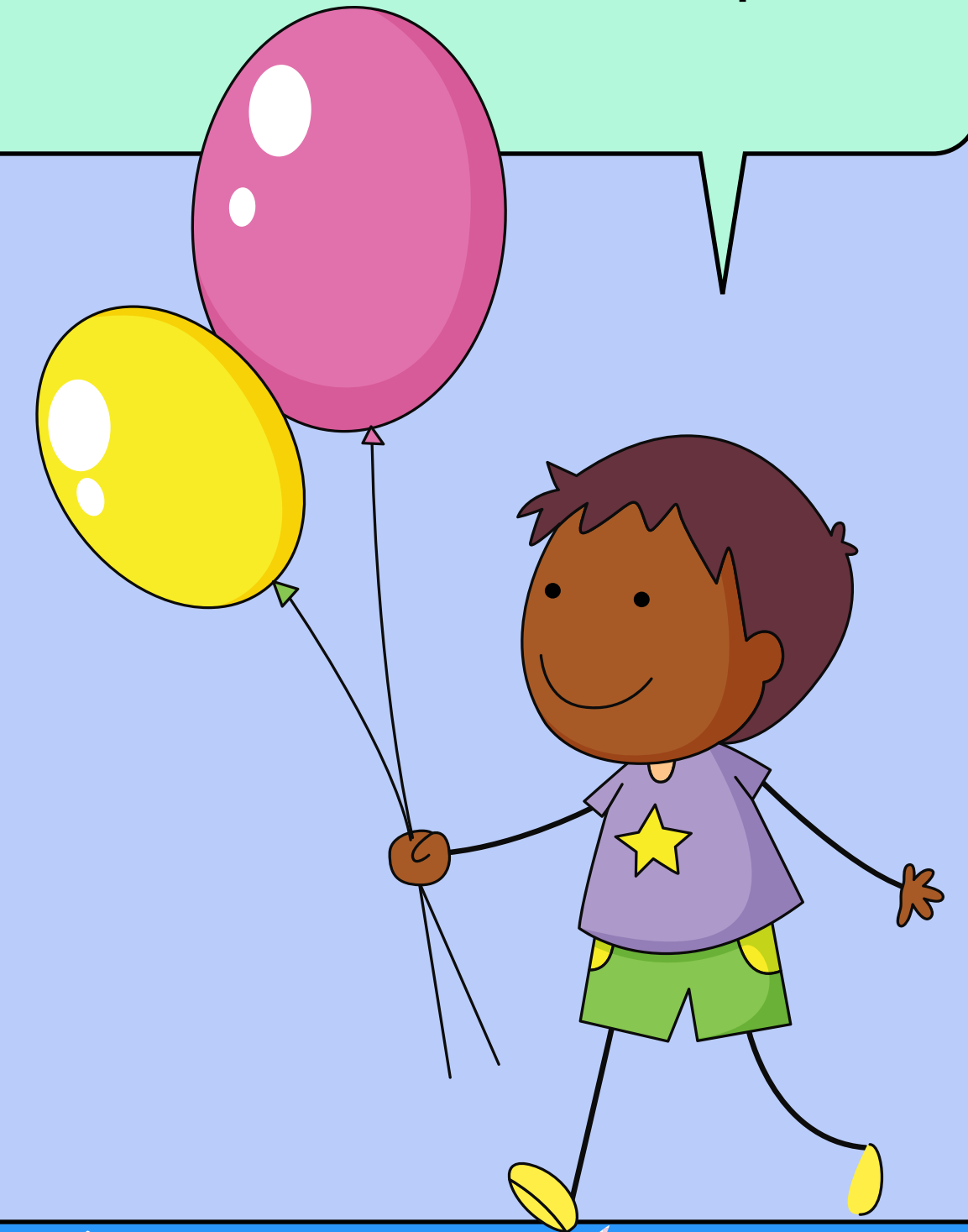
Think, pair, share.





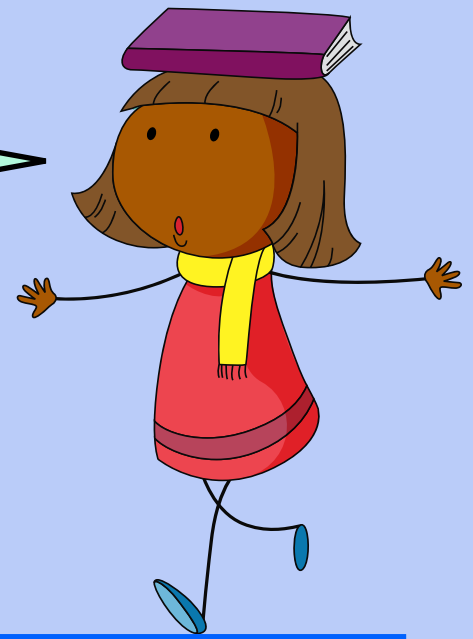
This painting represents air. Arcimboldo has used lots of different birds to make up the portrait.

Did you spot the eye made from a duck with an open beak?

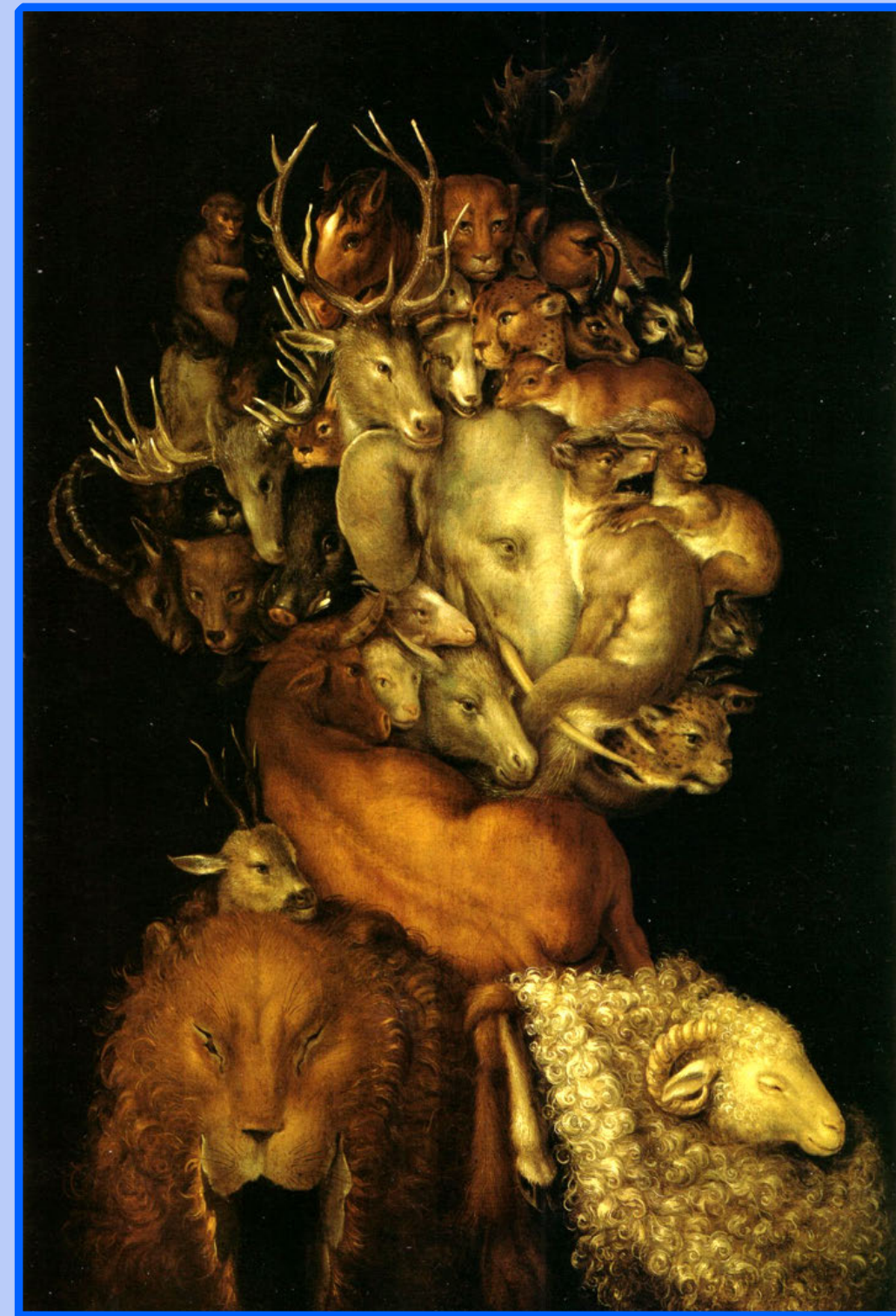




Which painting do you think represents earth? Are there any other items you would include in a portrait of the element earth?



Think, pair, share.





This painting represents earth. Arcimboldo has used lots of different land animals to make up the portrait.

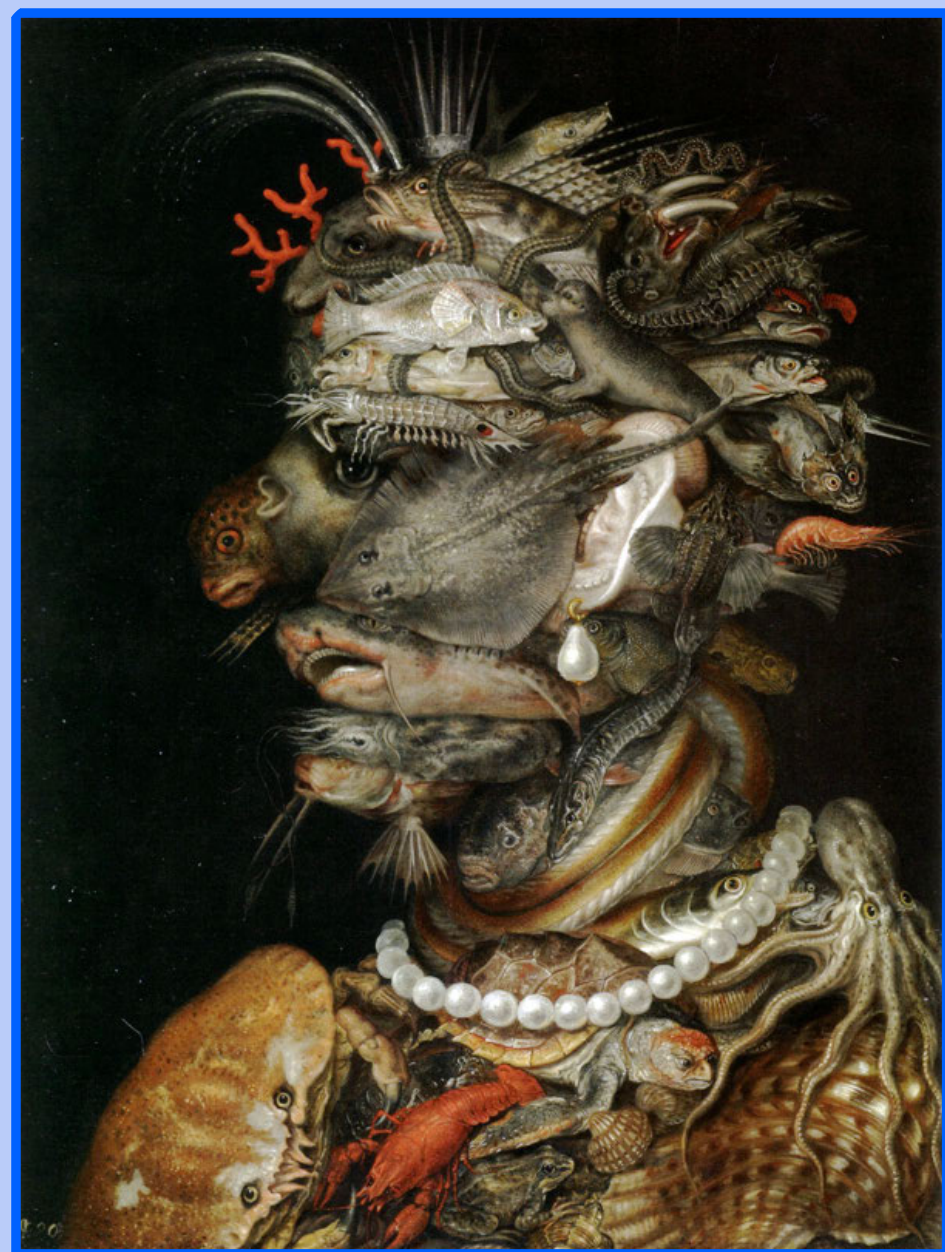


Did you spot the crown made from antlers and the wolf's open mouth for the eye?

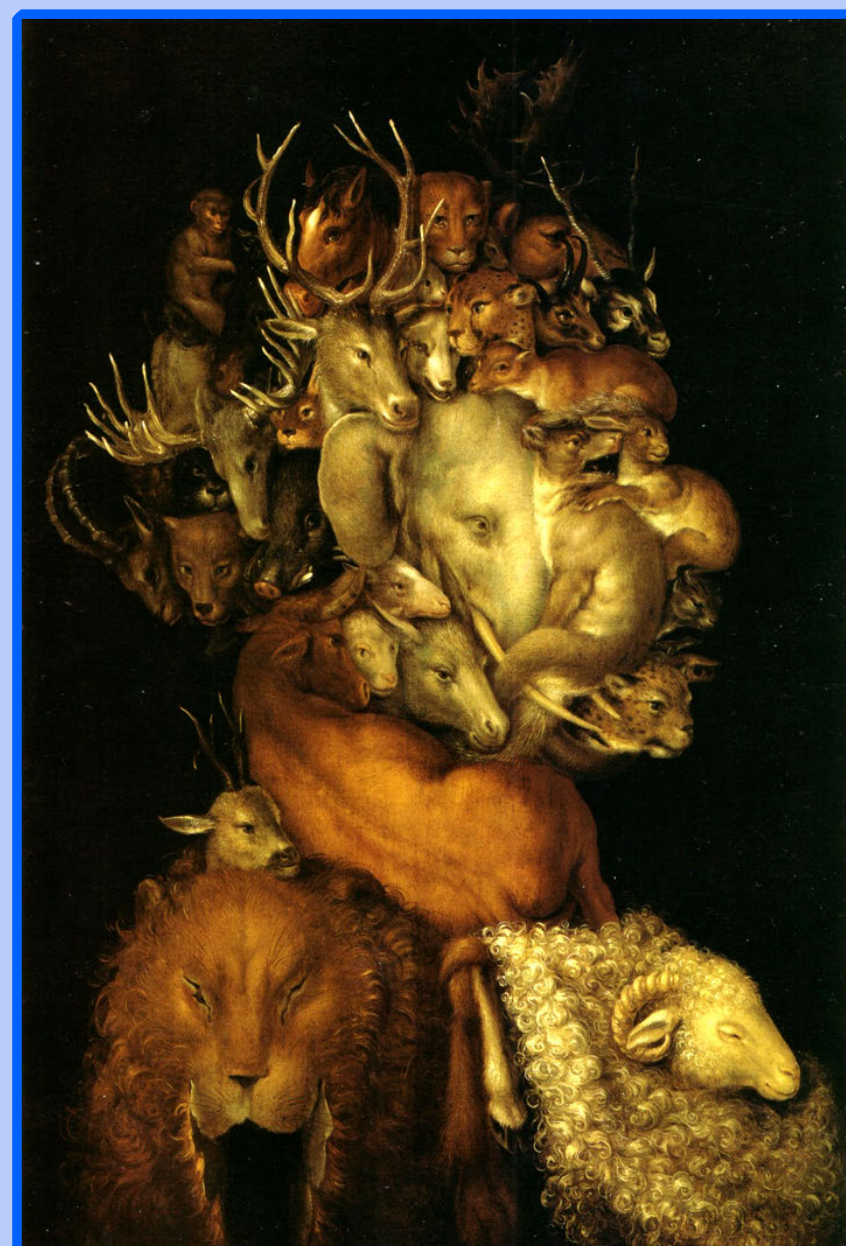


Plenary

The four elements can be used for different things. One way they are used is to group together peoples star signs. Some people think that people with the same star sign have similar personalities.



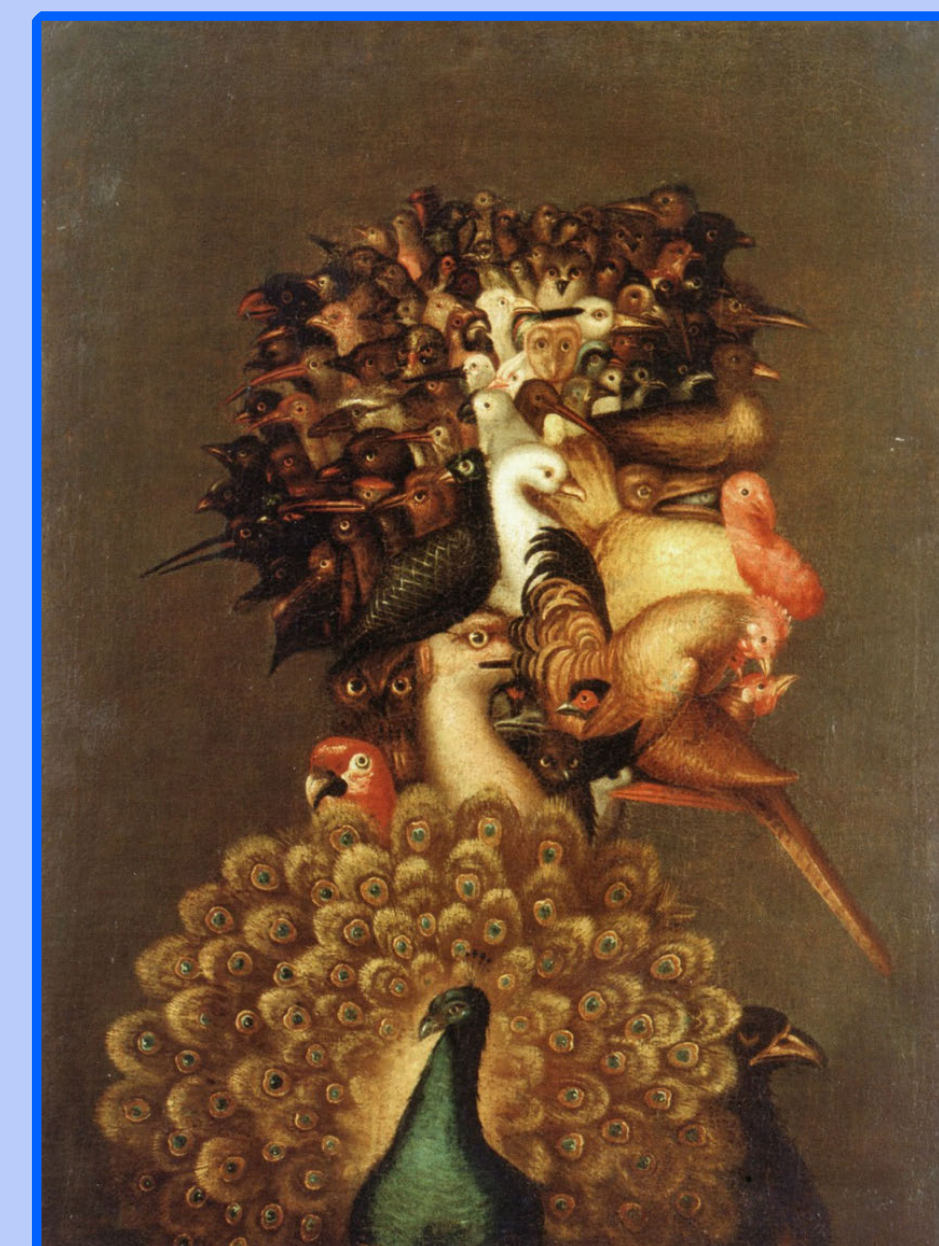
Water



Earth



Fire

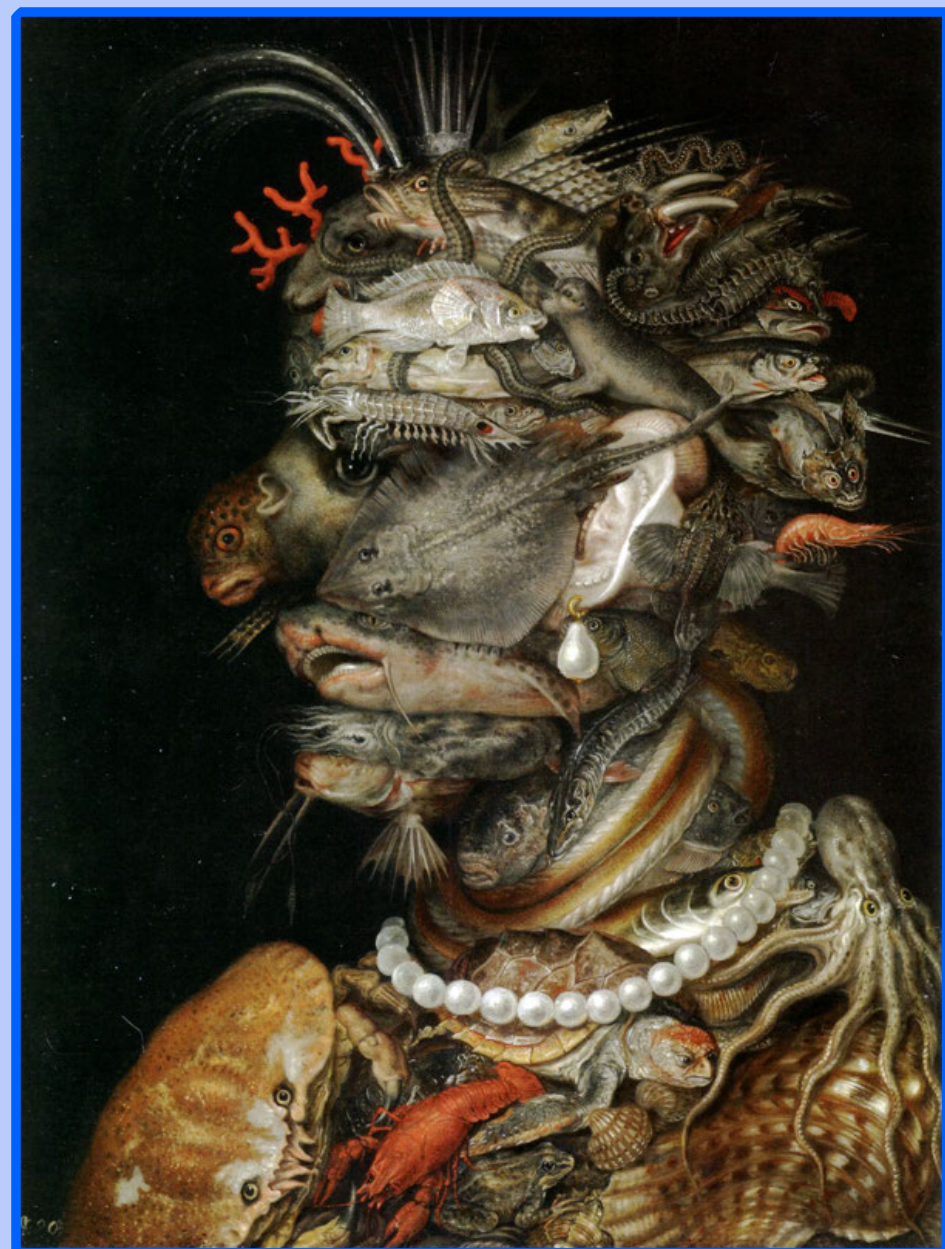
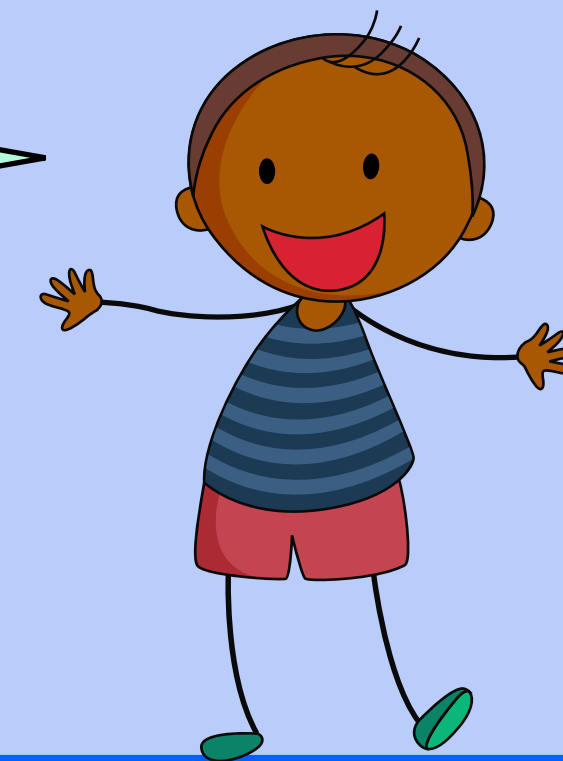


Air



People who are born under this element are thought to be enthusiastic, outgoing, hot-tempered and uncontrollable.

Which element is being described?



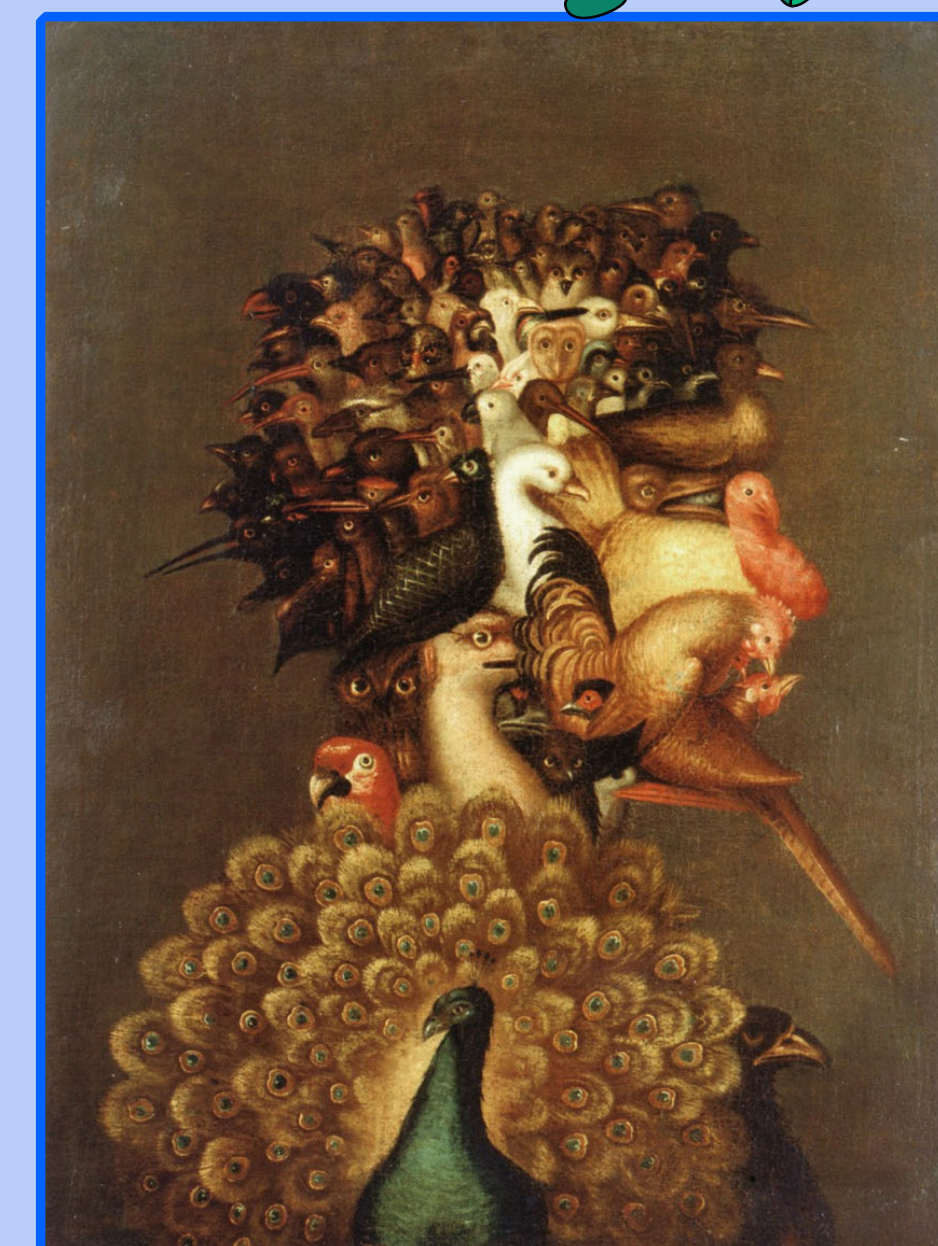
Water



Earth

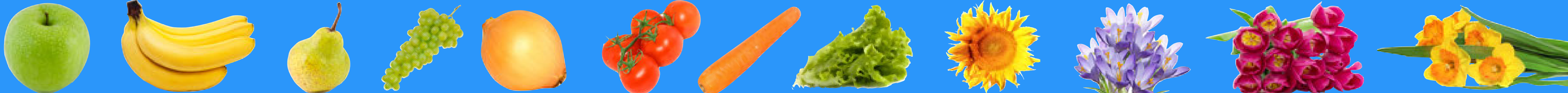


Fire



Air





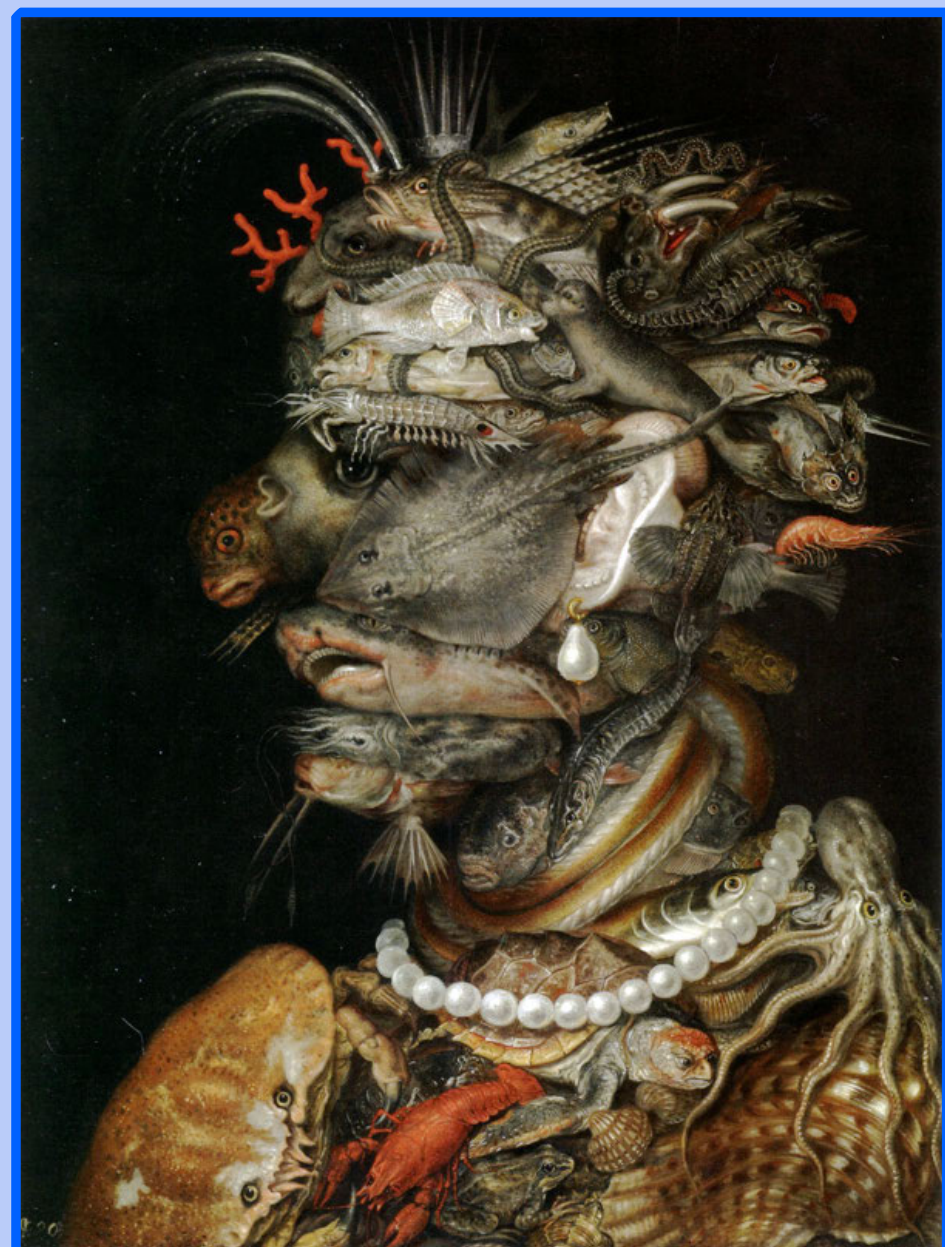
It was
fire!



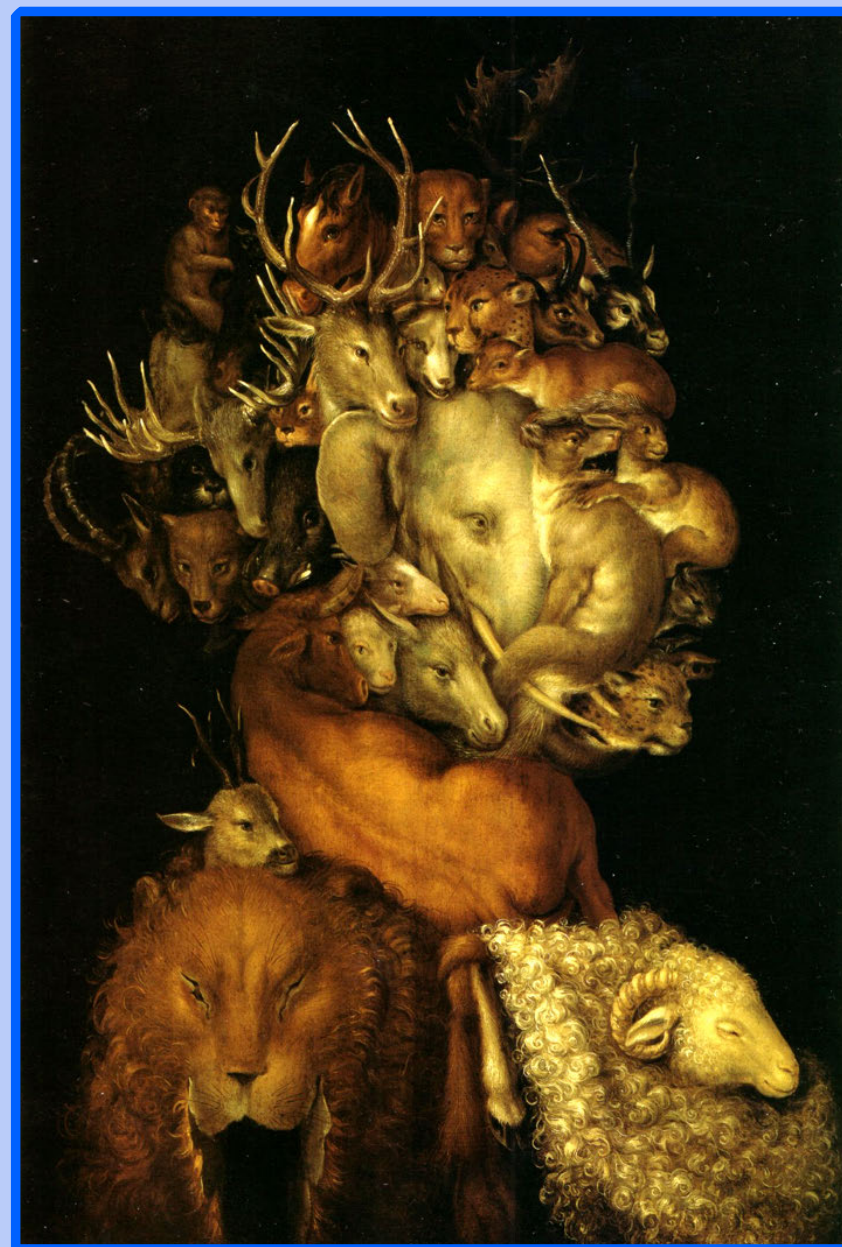


People who are born under this element are thought to be kind, social, intellectual and selfish.

Which element is being described?



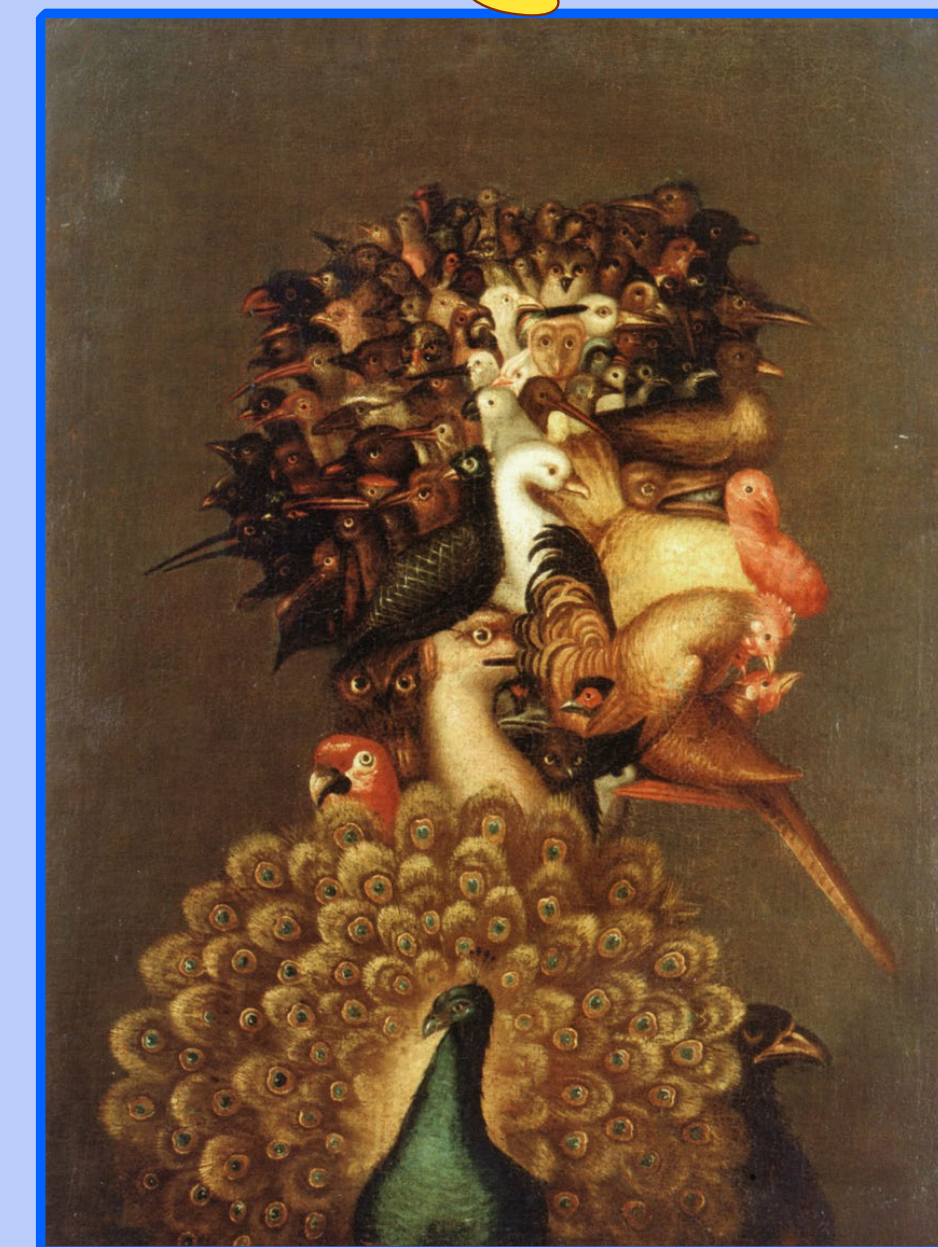
Water



Earth

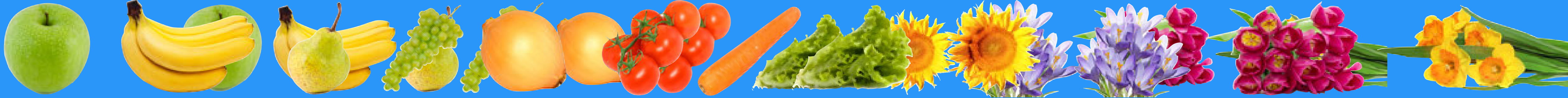


Fire



Air





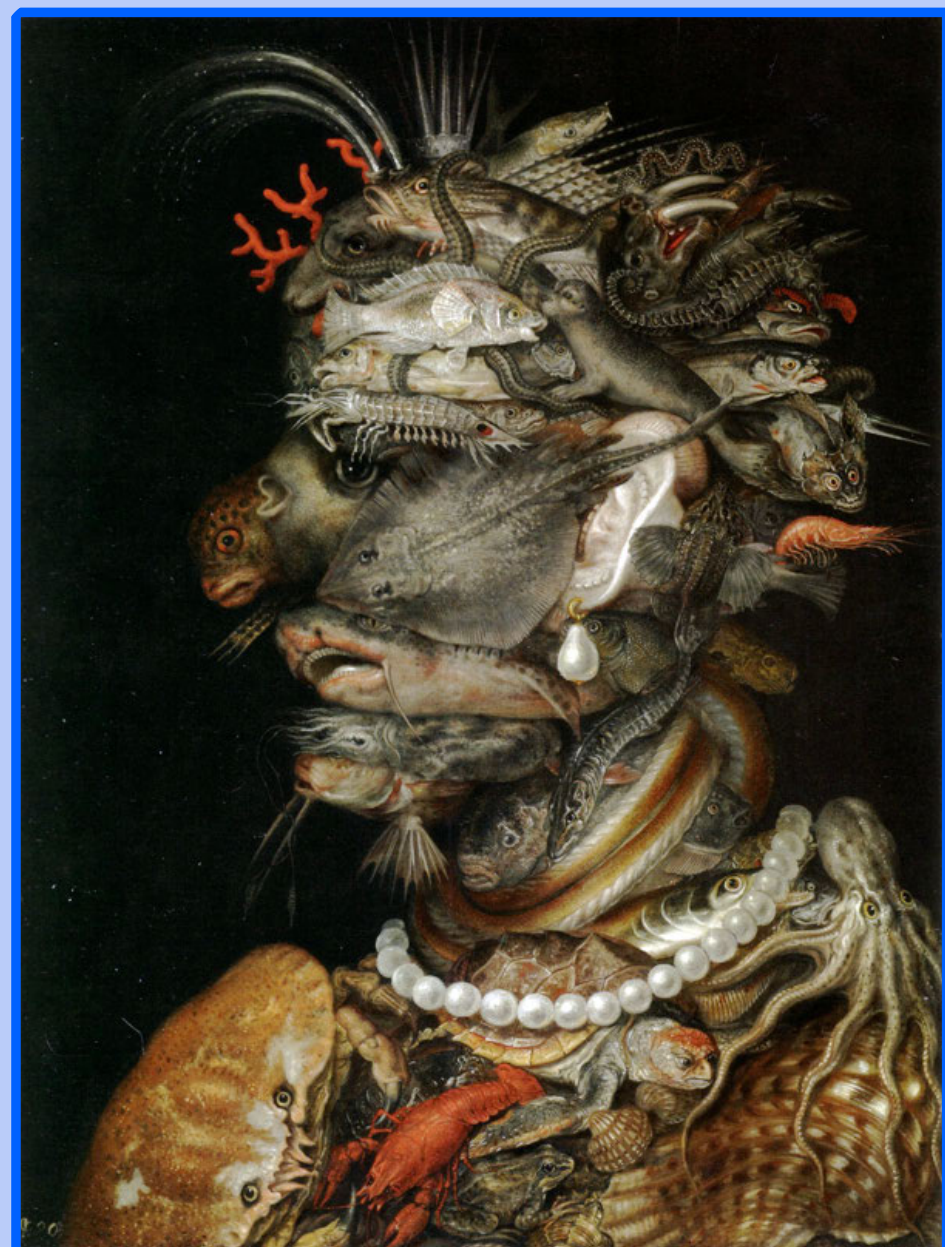
It was air!





People who are born under this element are thought to be calm, practical, brave and stubborn.

Which element is being described?



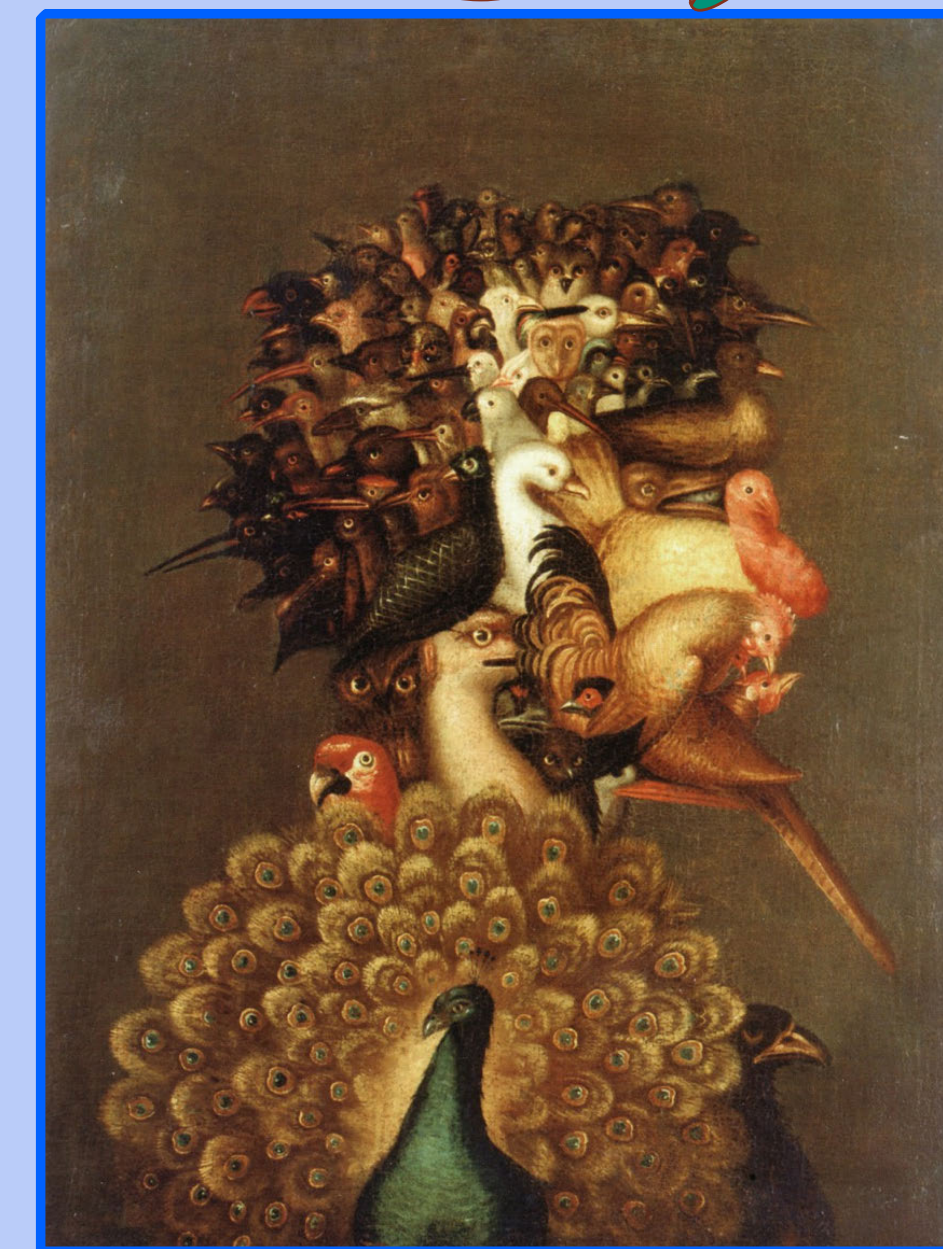
Water



Earth

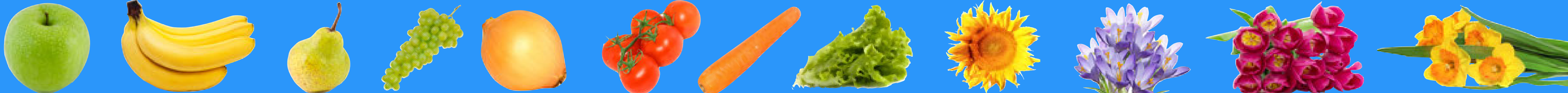


Fire



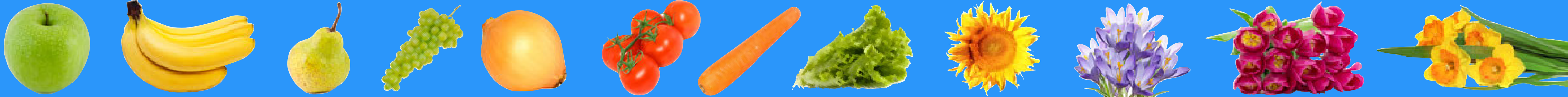
Air





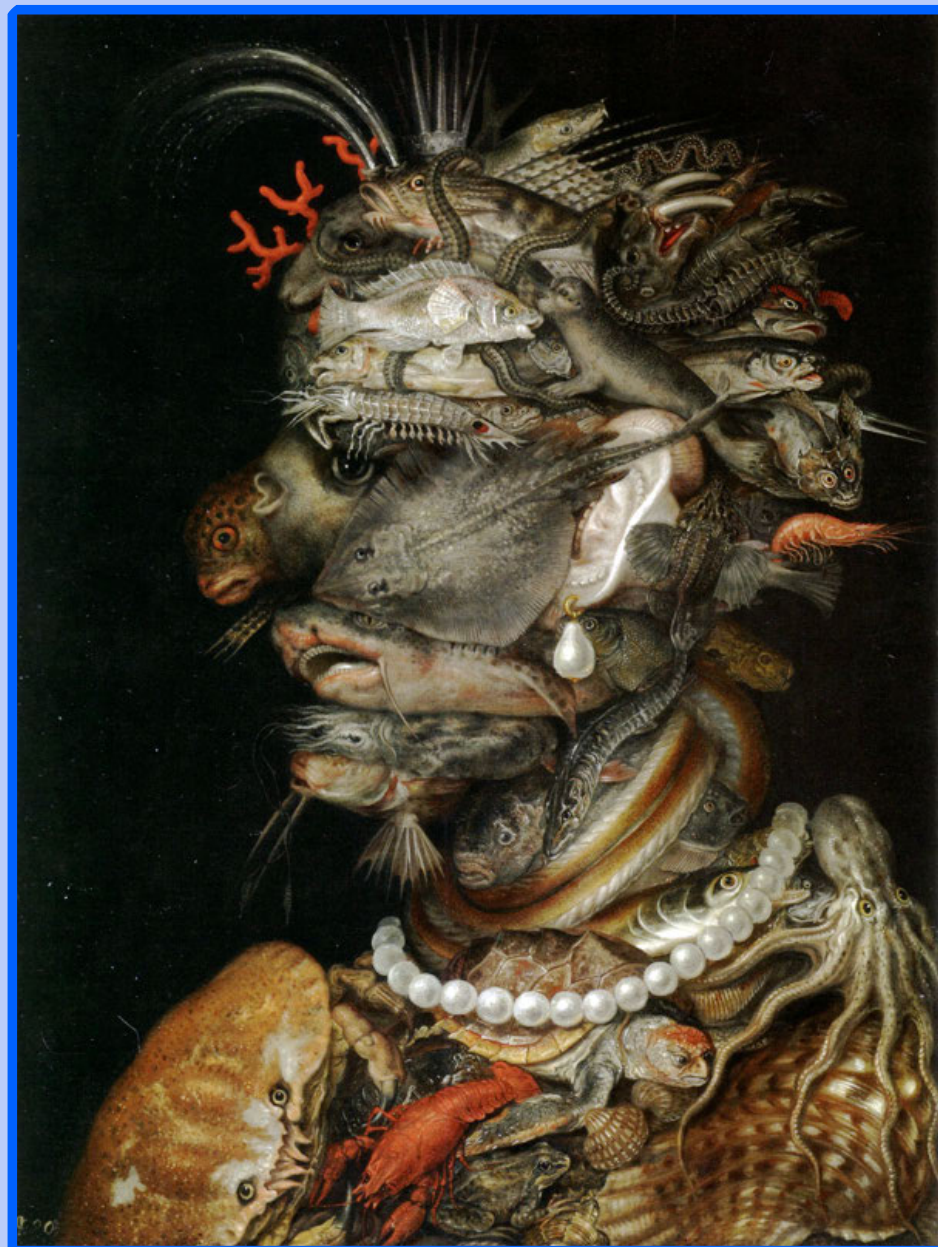
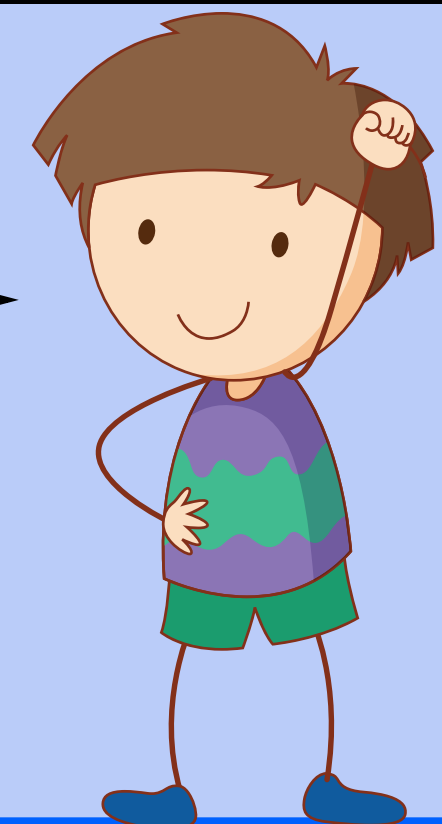
It was
earth!



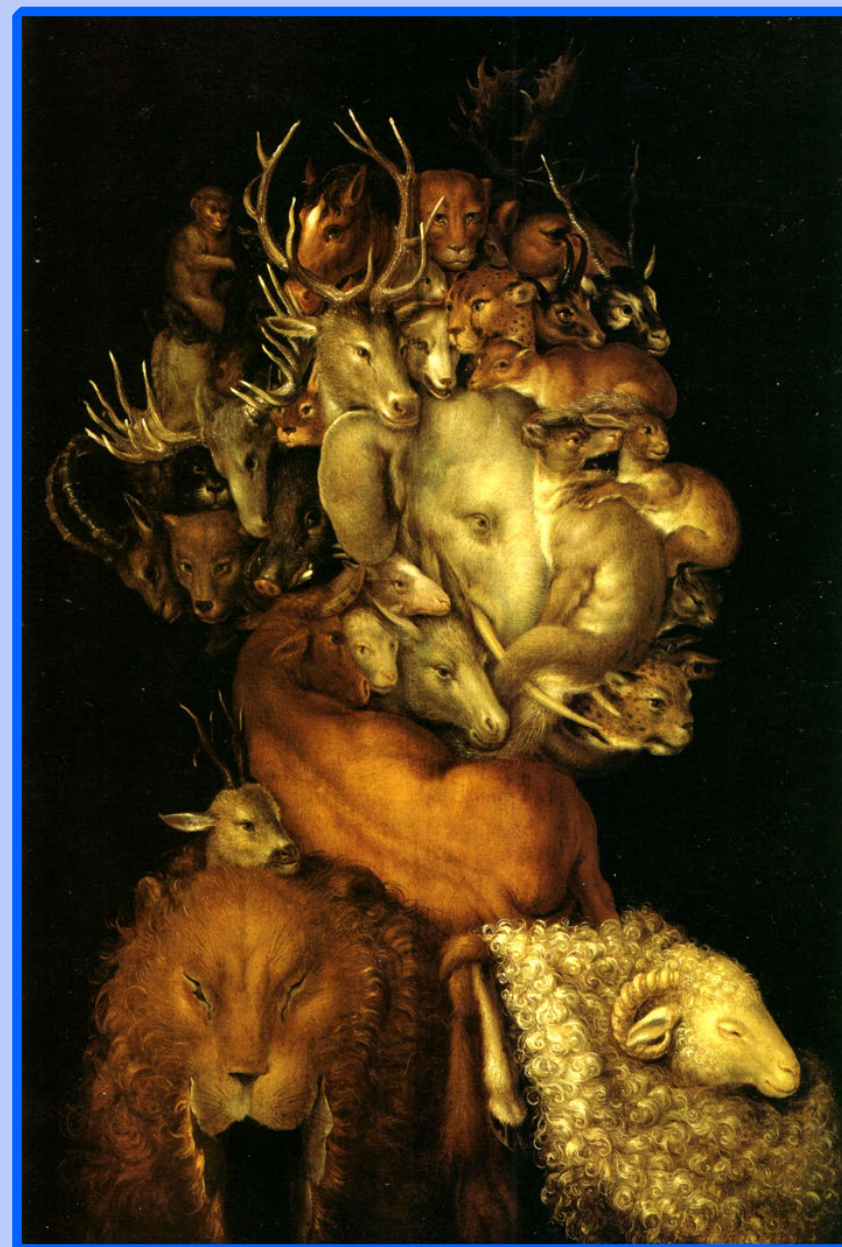


People who are born under this element are thought to be emotional, deep, imaginative and cold.

Which element is being described?



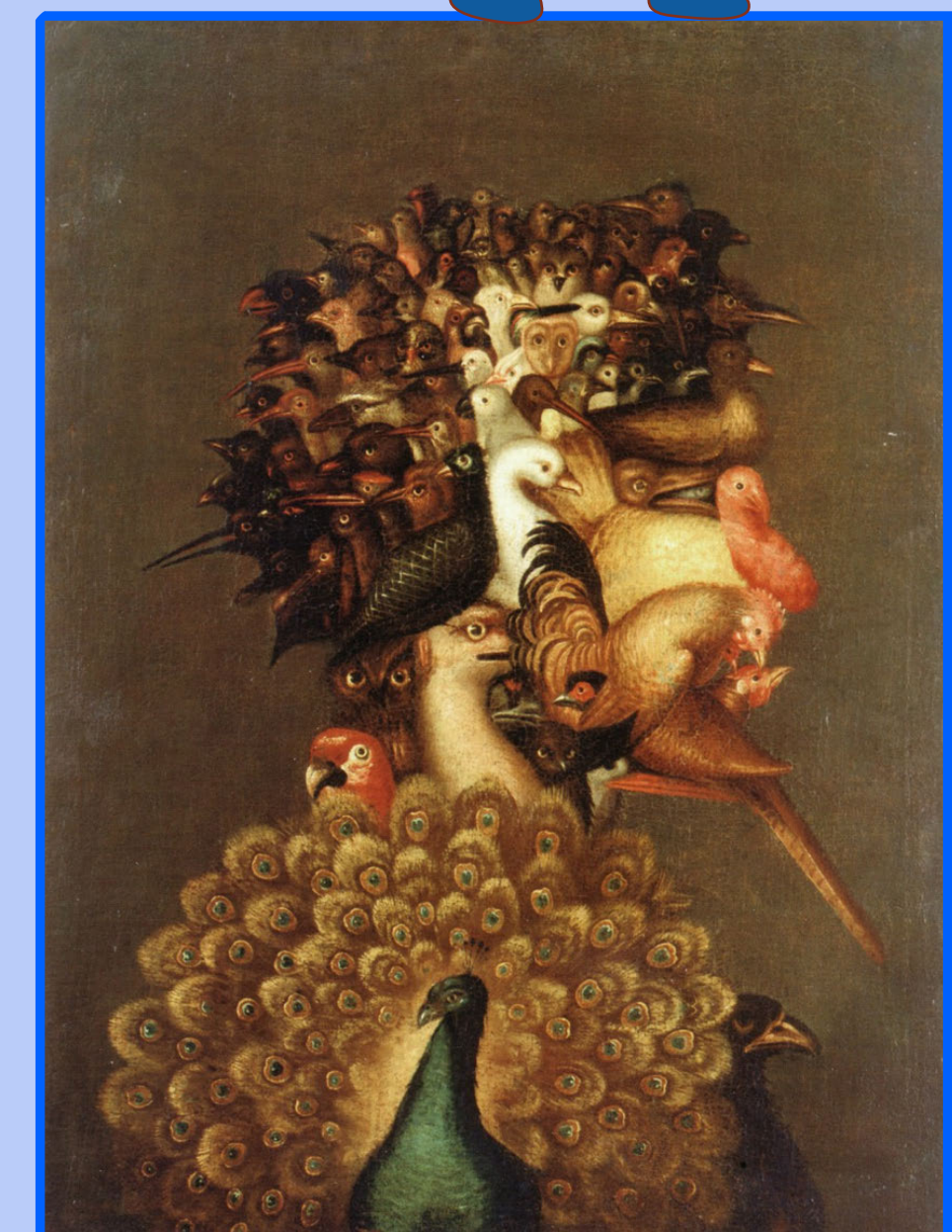
Water



Earth

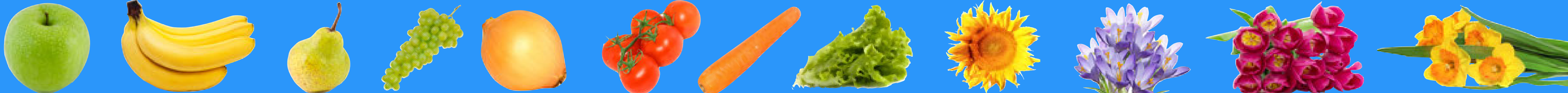


Fire



Air





It was
water!

