

# Giuseppe Arcimboldo

**Today we will be...**

Finding out about the work of Arcimboldo.







This is a self-portrait of Giuseppe Arcimboldo. He was an artist.

A self-portrait is a picture an artist makes of themselves.







Arcimboldo was from Milan in Italy. He was born around 1526 and died in 1593.

How does Arcimboldo's choice of colours in his portrait make you feel?

Think, pair, share.





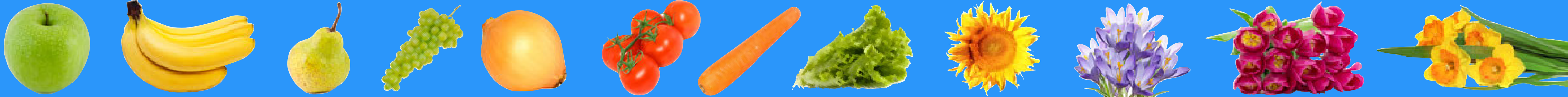


Arcimboldo started his career as a stained glass window designer just like his father, Biagio. Arcimboldo was also a costume designer.

This is a knight's costume that Arcimboldo designed.







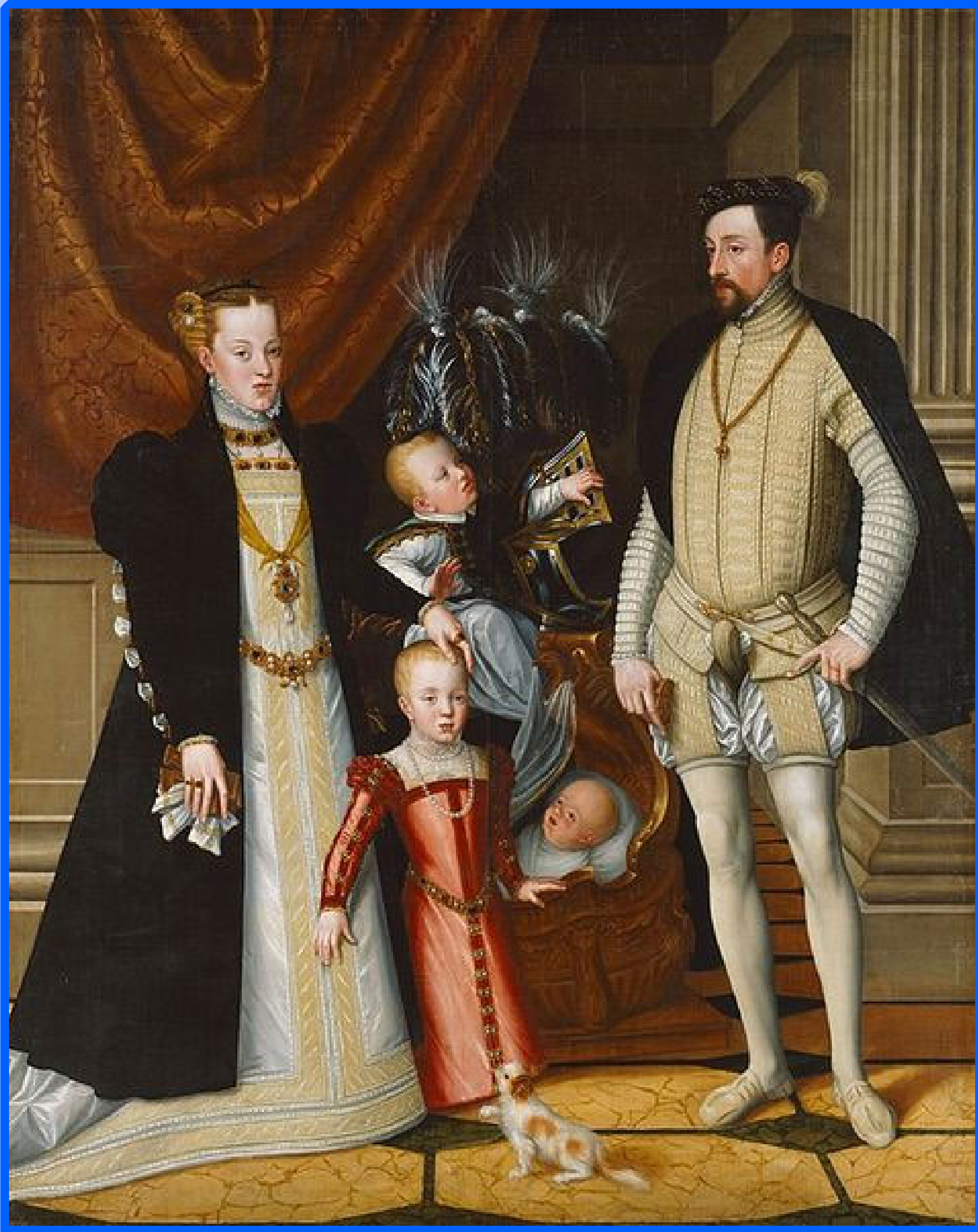
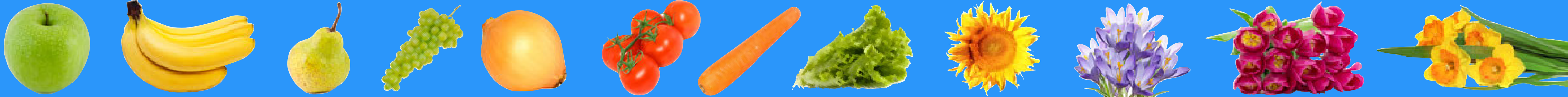
After working as a stained glass window designer Arcimboldo became the court portraitist in Vienna.



This painting is of the Roman Emperor Maximilian II and his family.







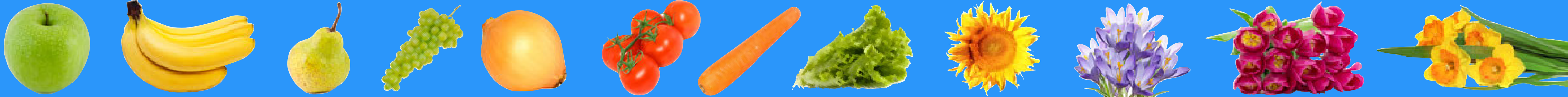
Arcimboldo created this portrait around 1563.

What did Arcimboldo use to make this picture?

Think, pair, share.

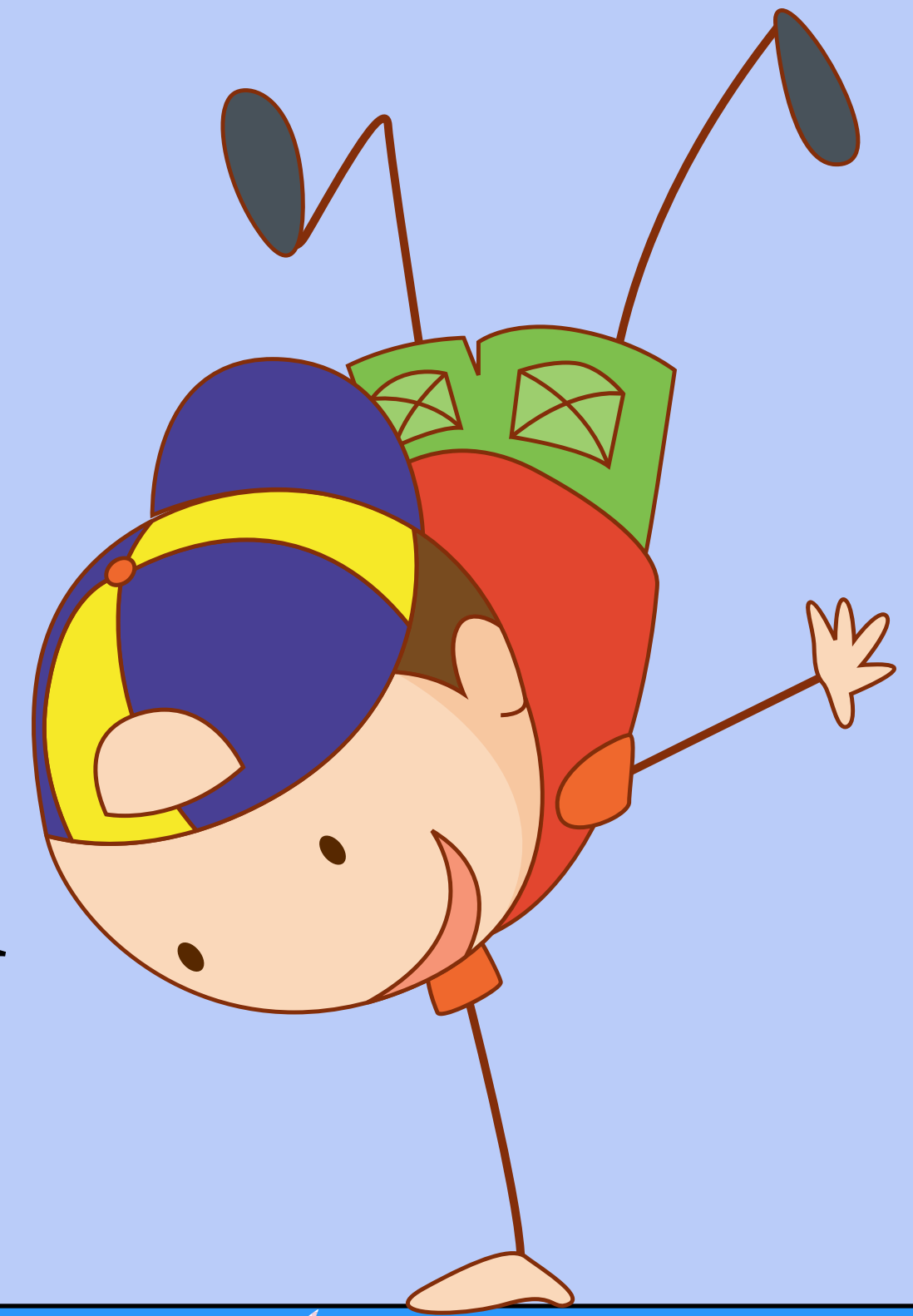






Arcimboldo mainly used oil paints on canvas when creating portraits.

Were all his paintings similar to this one?







Arcimboldo painted a lot of portraits. Most of them were very different to these two portraits!



We will find out just how different they were at the end of this lesson.







Rudolf II as Vertumnus (1590)

Rudolf II was the son of Maximilian II. He was about eleven when Arcimboldo painted him in the family portrait.



How is this portrait different to Arcimboldo's other portraits?

Think, pair, share.



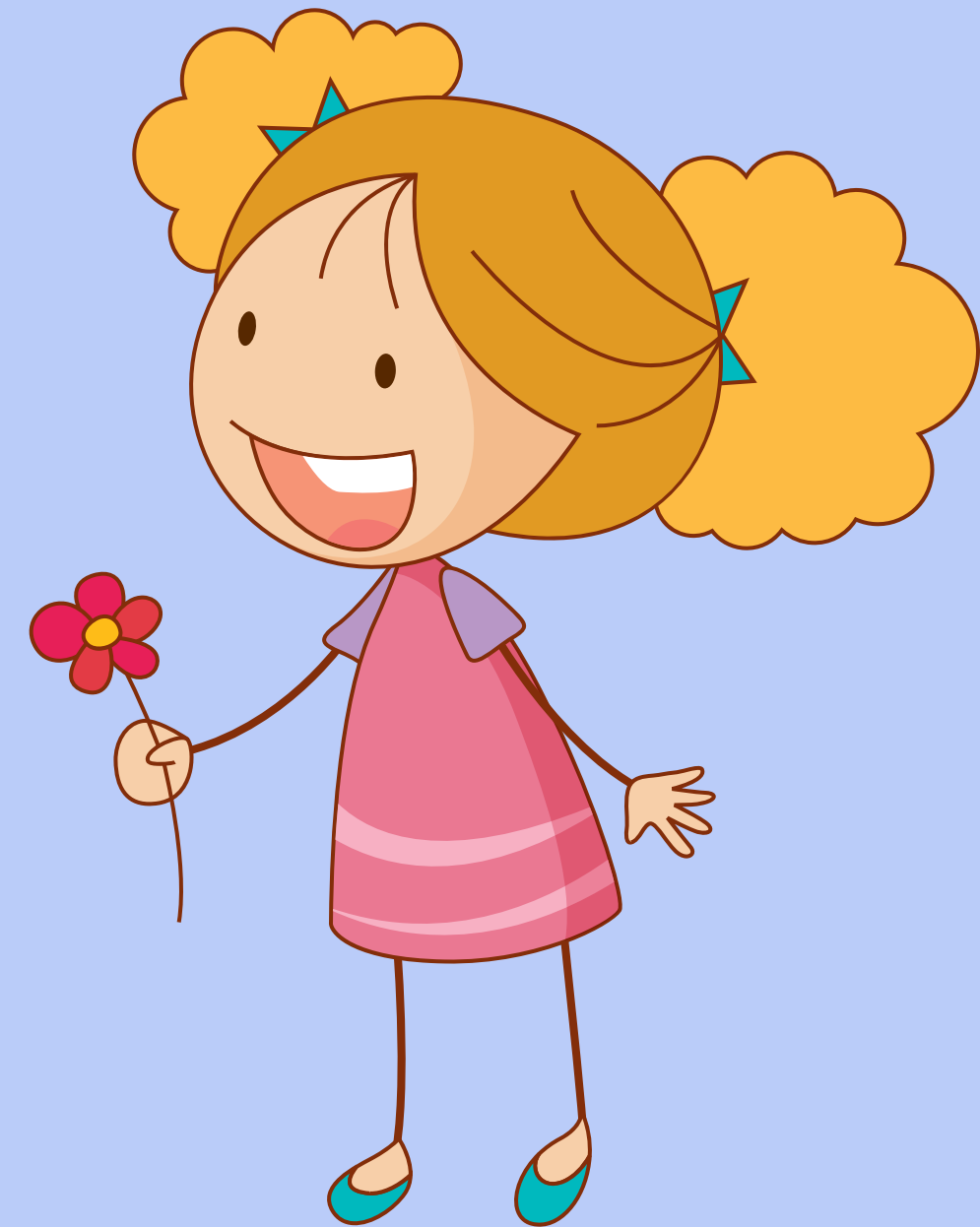




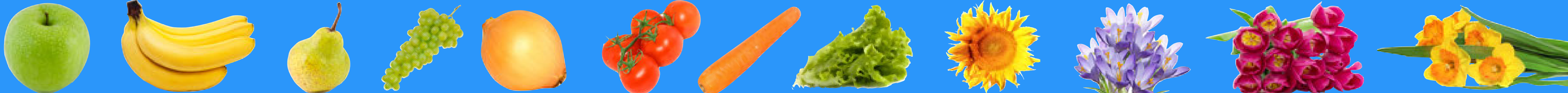
In this portrait Arcimboldo has imagined Rudolf II as Vertumnus. Vertumnus was the Roman god of changes in nature and life. The fruit, vegetables and flowers represent seasonal changes in nature.

Which fruits, vegetables and flowers can you see?

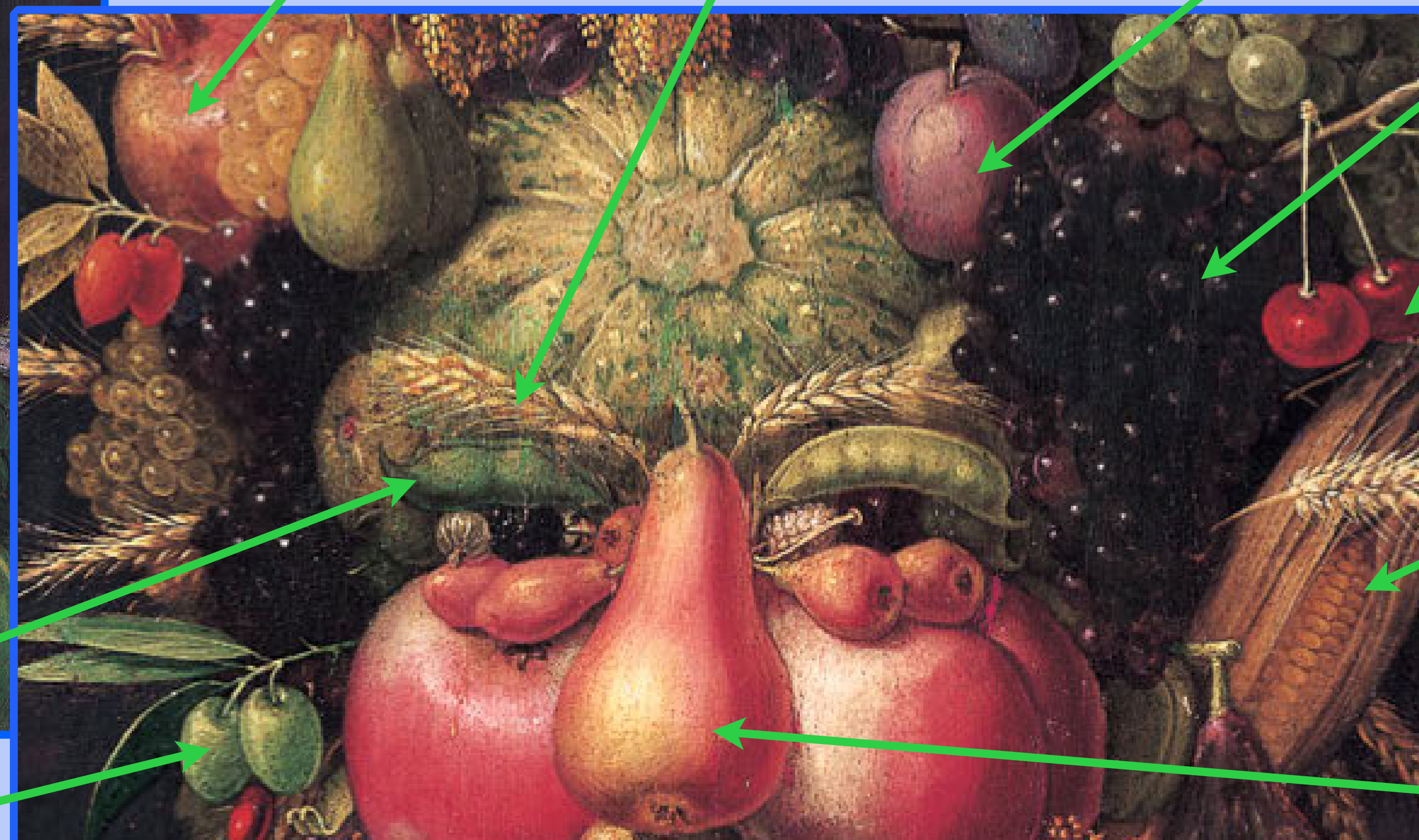
Think, pair, share.







Here are some of the things we spotted!



Pomegranate

Ear of corn

Plum

Grapes

Cherry

Corn on  
the cob

Pear

Bean pod

Olive







Here are some of the things we spotted!



Carnation

Lily

Onion

Spring onion

Artichoke

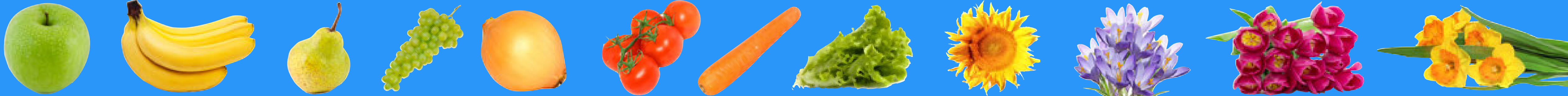
Marrow

Cabbage leaf

Chilli



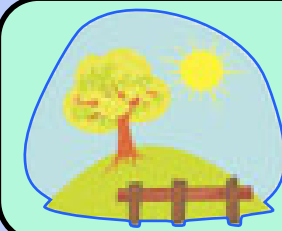




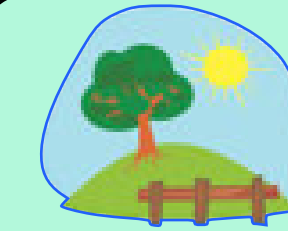
Which bits of this portrait do you think represent each season?

There is no right or wrong answer.

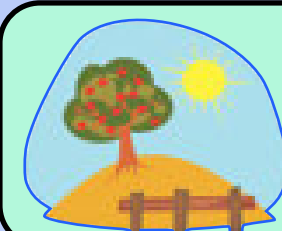
Think, pair, share.



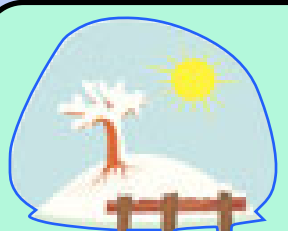
Spring



Summer



Autumn



Winter

