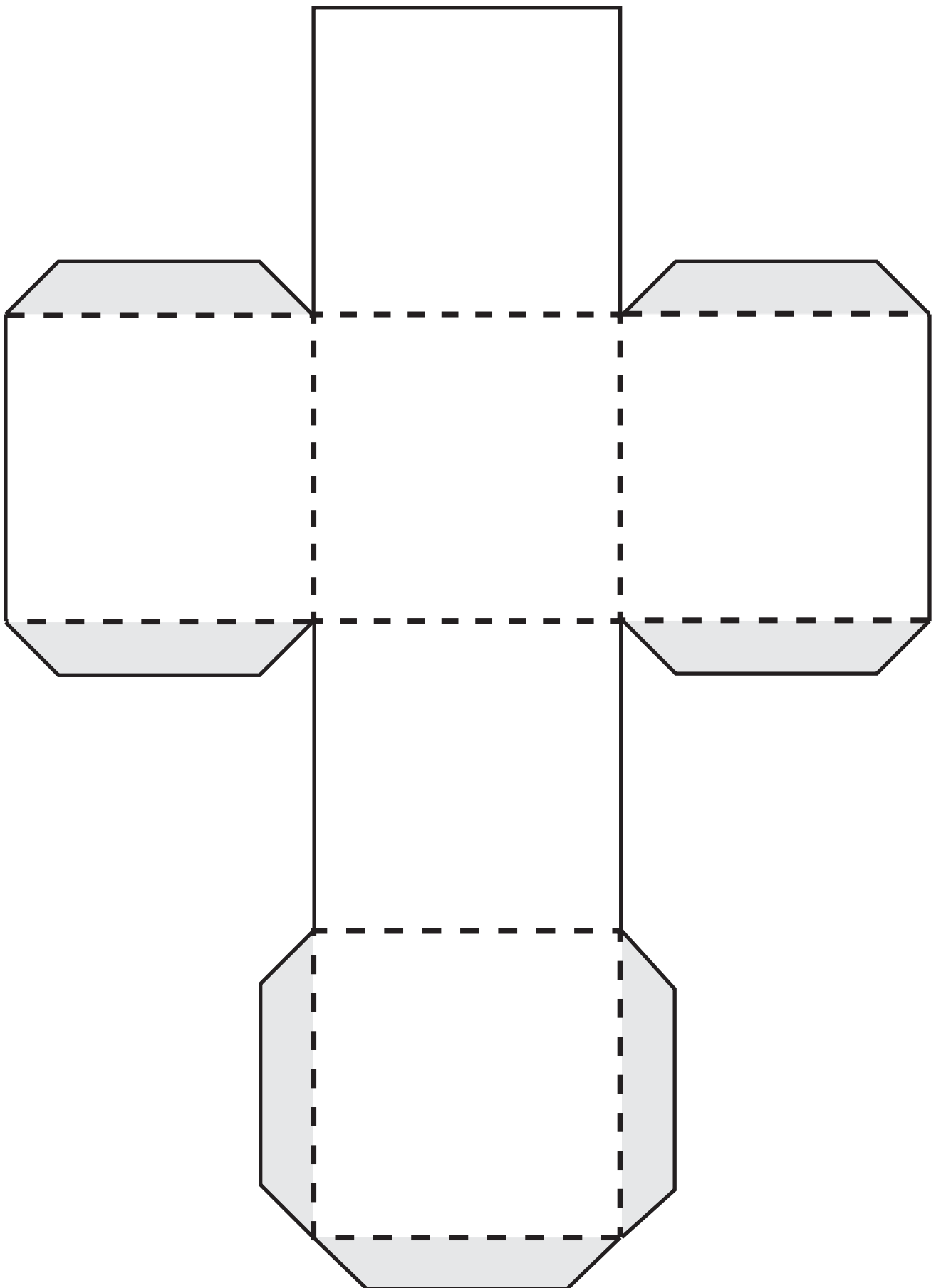


Make a 3D shape from a net

1. Cut along the solid lines
2. Fold along the dotted lines
3. Glue on the back of the gray areas



1. Cut along the solid lines
2. Fold along the dotted lines
3. Glue on the back of the gray areas

-
- A net of a cube is shown, consisting of six squares arranged in a cross shape. The four flaps (top, bottom, left, and right) are shaded light gray. The top and bottom flaps are trapezoids, while the left and right flaps are rectangles. The central square is white. Dashed lines indicate the fold lines.

Make a 3D shape from a net

1. Cut along the solid lines
2. Fold along the dotted lines
3. Glue on the back of the gray areas

