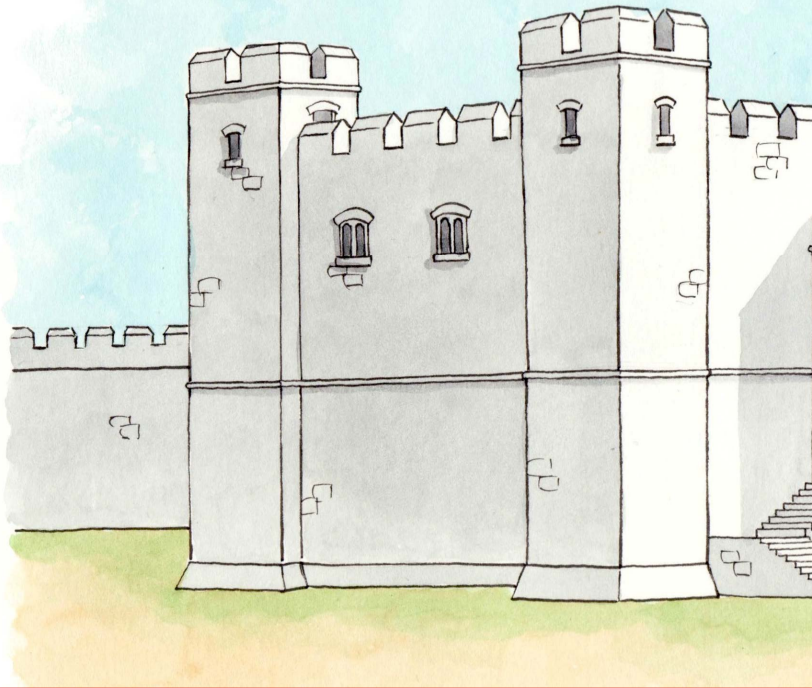


LIVING IN A CASTLE

When you think of a castle, you might have stories like King Arthur in mind. You might even think of stories about princesses and dragons. But what were castles really like and who lived and worked in them?

Hundreds of years ago, when these castles were new, lots of people lived in them. The high towers and thick walls kept them safe when there were battles. Today, many castles are ruins and are falling down.



Practice questions

c What is this text about?

Tick **one**.

building a castle

☐

repairing a castle

☐

living in a castle

☐

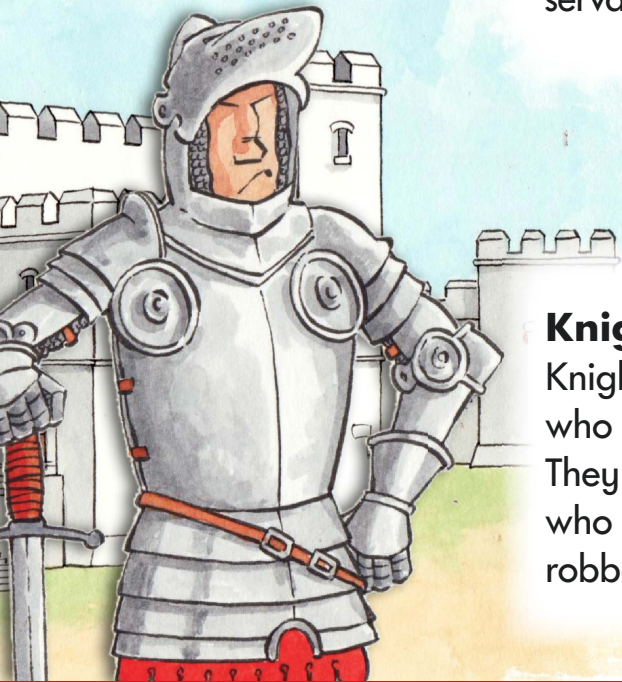
looking for a castle

☐

d **Find** and **copy** the name of the story that people might think of when they think of castles.

Lords and Ladies

A castle usually belonged to a rich lord. He lived in the castle with his family. His wife was called a lady. Their children had their own garden to play in and lots of servants to do things for them.



Knights

Knights were important men who worked for the lord. They were skilled fighters who kept the land safe from robbers and enemies.



8 Who did most castles belong to?

Tick **one**.

jesters

☐

lords

☐

knights

☐

servants

☐

1 mark

9 **Find** and **copy one** word that shows knights were very good fighters.



1 mark

10 Who did knights protect the land from?



1 mark



Jesters

A jester was there to amuse the lords and ladies. He did this by singing, dancing, telling stories or even juggling.

Servants

The servants in a castle often worked from early in the morning to late at night. They did many important jobs such as cooking, cleaning and washing. They also cared for the children and looked after the gardens.

11 When did the servants start work?



1 mark

12 Tick to show what jesters and servants did in the castle.
The first one has been done for you.

	Jesters	Servants
gardening		✓
cleaning		
dancing		
juggling		
cooking		

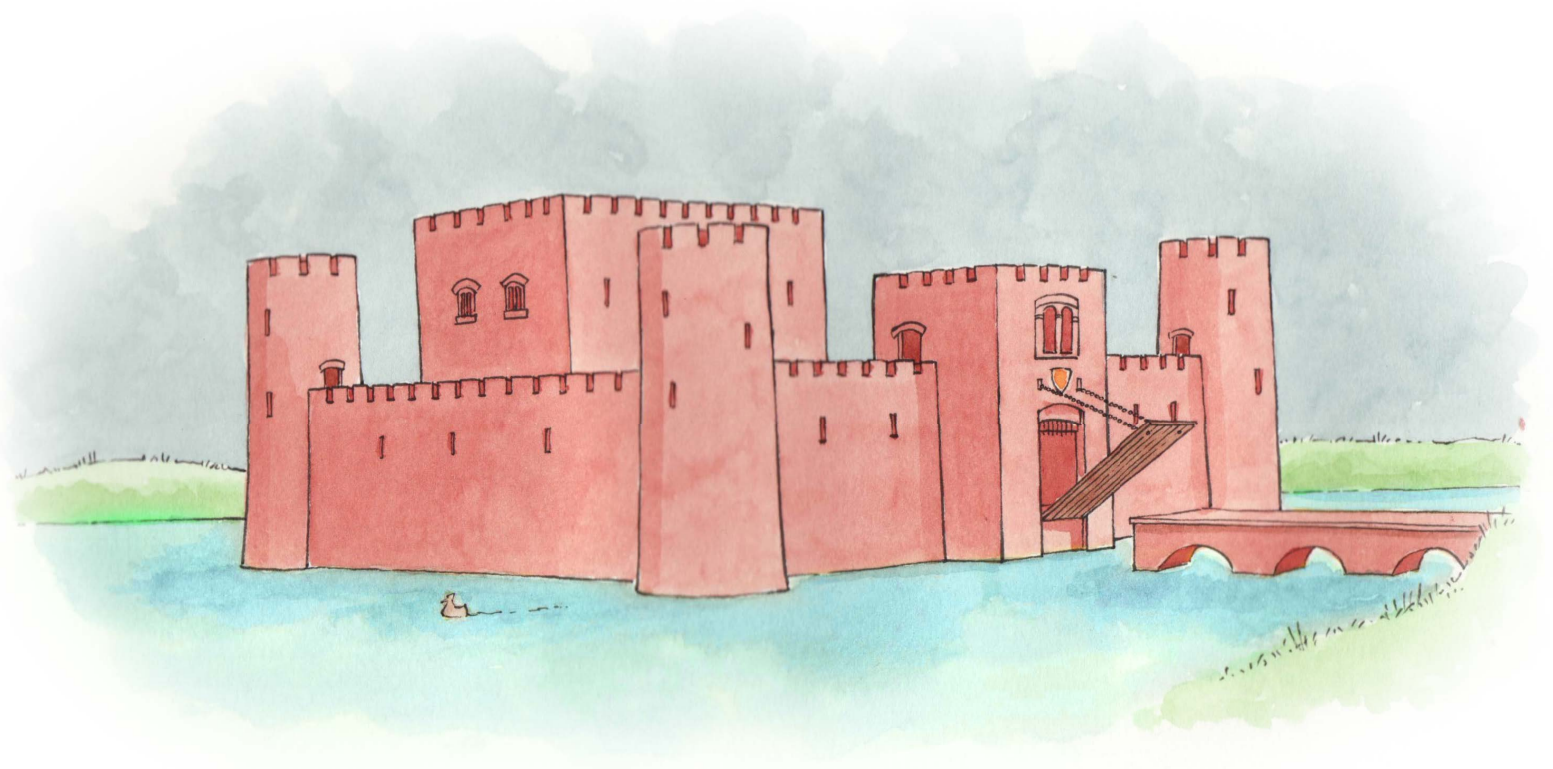


1 mark

Did you know?

Some castles were surrounded by a moat filled with deep water to stop enemies getting in. The only way into a castle was over a drawbridge which was lowered across the moat.

Castles were very noisy and smelly places. Animals roamed inside the walls and all sorts of people worked there. People who made things from metal clanged out armour and weapons, soldiers and knights practised fighting, and children played. The people who worked in the kitchens had to make dinner for all these people.



13

Why were some castles surrounded by a moat?



1 mark

14

What made castles smelly places?



1 mark

15

Give **two** things that people made inside the castle walls.

1.

2.



1 mark